

## 10. Tafeln

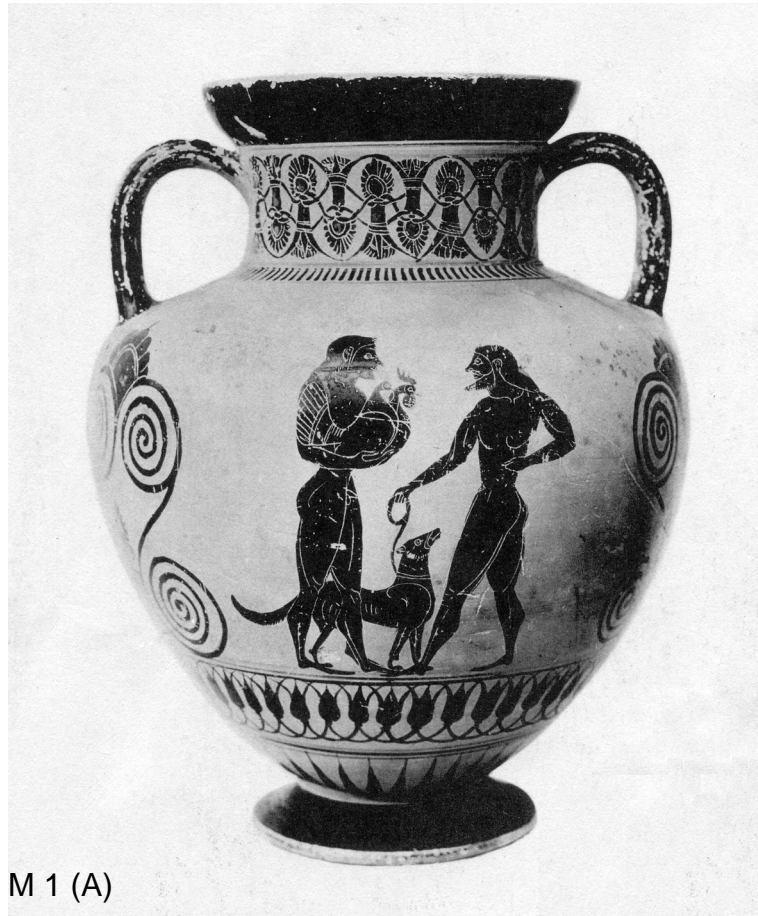


MO (A)

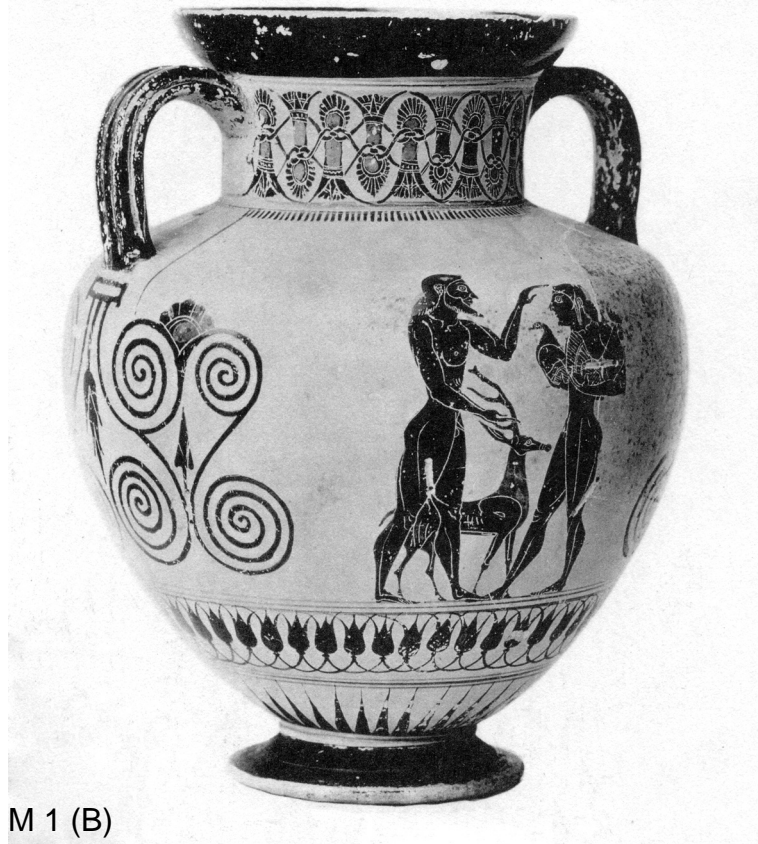


MO (B)





M 1 (A)



M 1 (B)



M 2



M 3



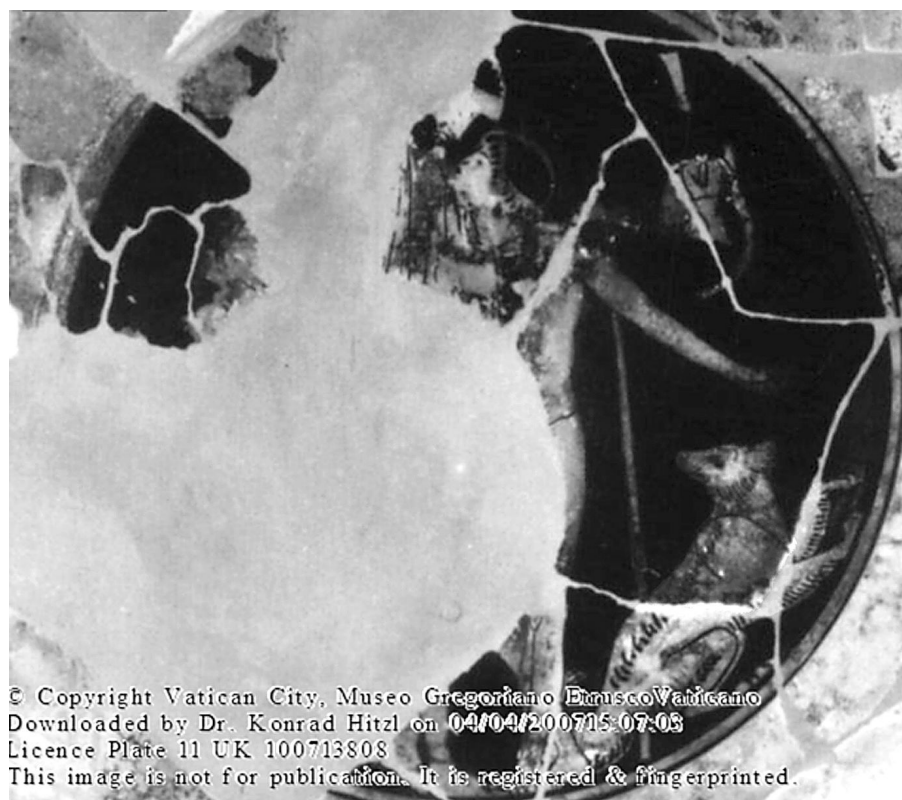
M 4



M 4 Zeichnung 1877



M 5



© Copyright Vatican City, Museo Gregoriano EtruscoVaticano  
Downloaded by Dr. Konrad Hitzl on 04/04/2007 15:07:05  
Licence Plate 11 UK 100713808  
This image is not for publication. It is registered & fingerprinted.

M 6





M 7



M 8 (A)



M 8 (B)





M 9



M 10 (A)





M 11



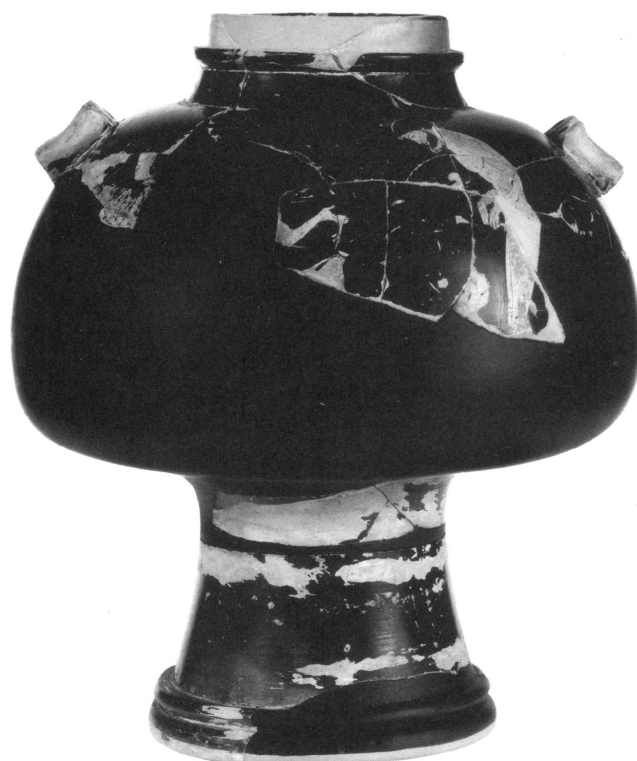
M 12 (B) Zeichnung Mariani



M 12 (A) Zeichnung Mariani



M 12 (B)



M 12 (A)



M 13



M 14





M 15 (1)



M 15 (2)



M 15 (3)



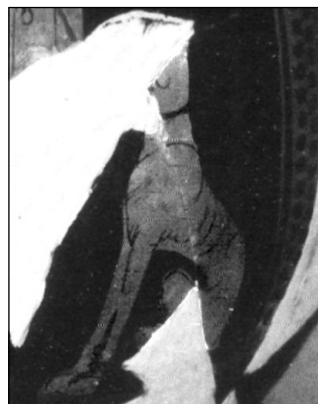
M 15 (4)



M 16 (A)



M 17 (A)

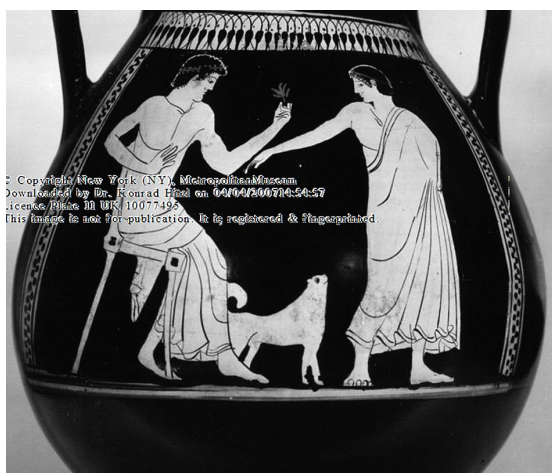


M 17 (A) Detail





M 18 (A)



M 19 (A)



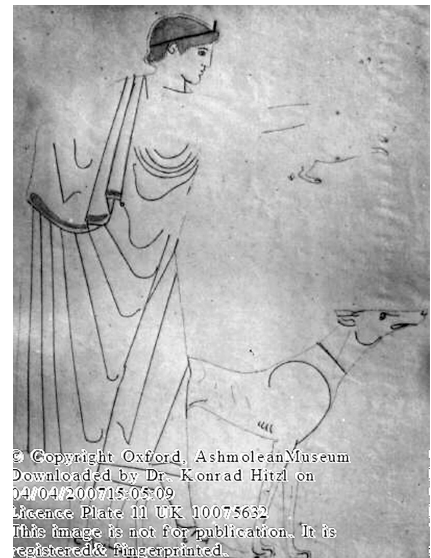
M 19 (B)





© Copyright Oxford, AshmoleanMuseum  
 Downloaded by Dr. Konrad Hitzl on 04/04/2007 15:05:09  
 Licence Plate 11 UK 10075632  
 This image is not for publication. It is registered & fingerprinted.

M 20 (B)



© Copyright Oxford, AshmoleanMuseum  
 Downloaded by Dr. Konrad Hitzl on  
 04/04/2007 15:05:09  
 Licence Plate 11 UK 10075632  
 This image is not for publication. It is  
 registered & fingerprinted.

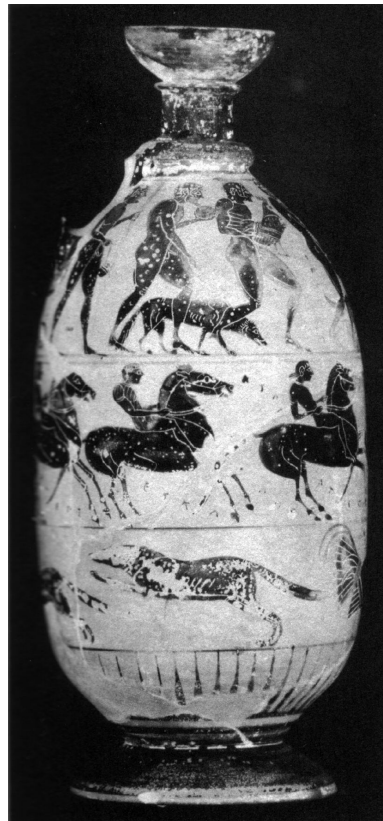
M 20 (B) Zeichnung Mariani



M 21 Detail



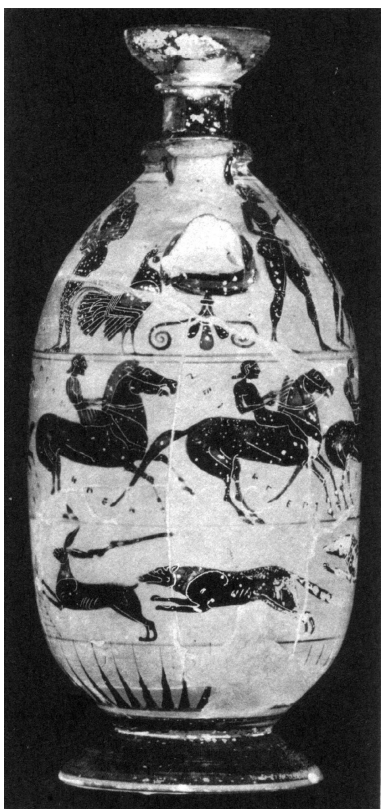
MM 1 (1)



MM 1 (2)



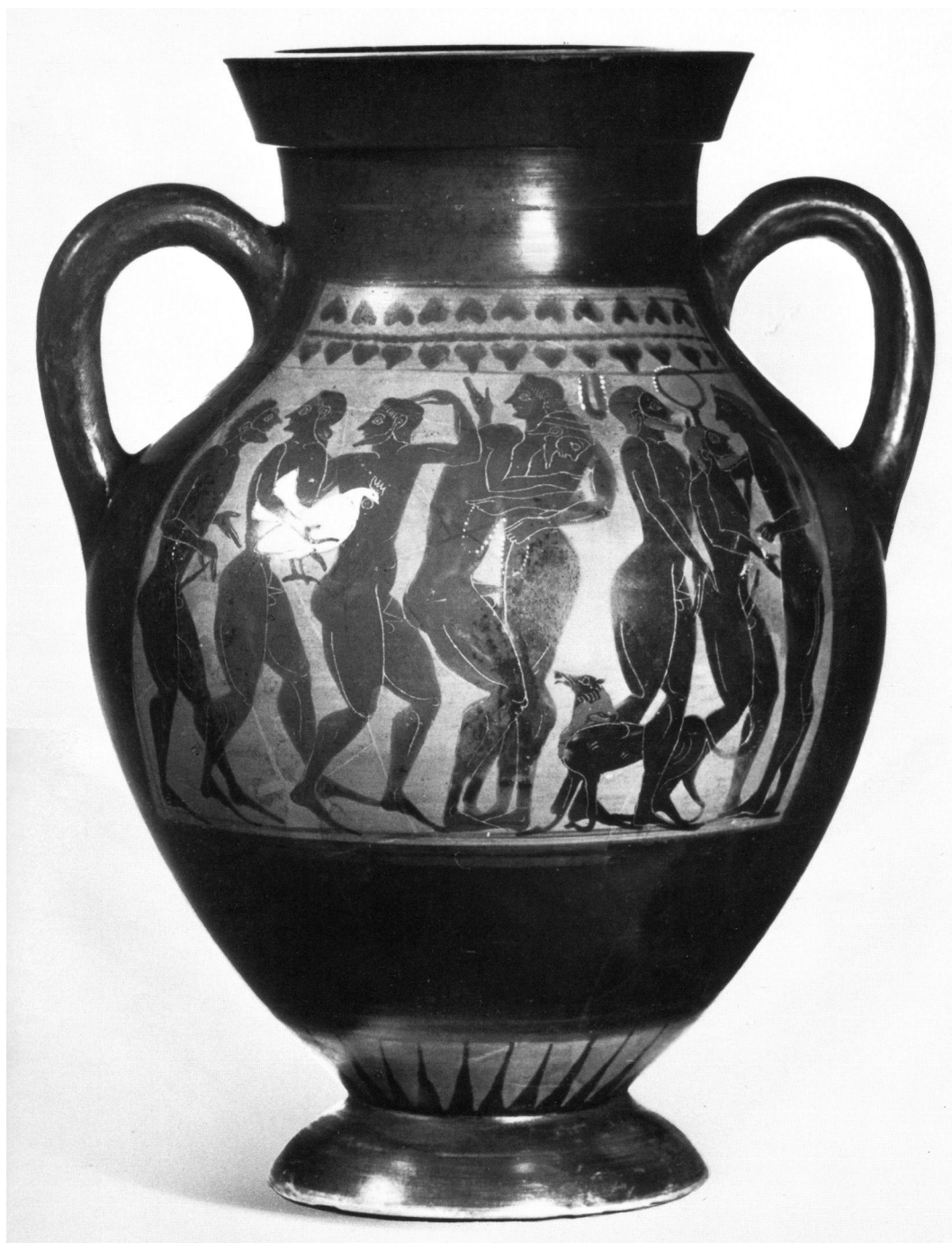
MM 1 (3)



MM 1 (4)



MM 2 (B)

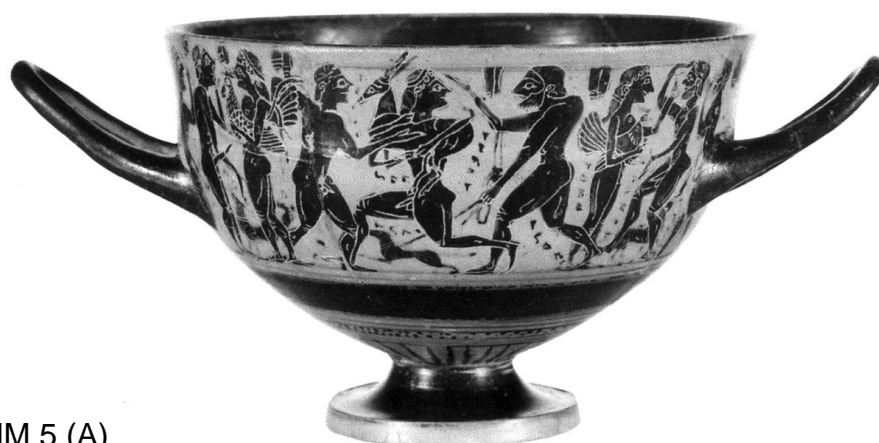


MM 3 (A)





MM 4 (A)



MM 5 (A)



MM 5 (B)



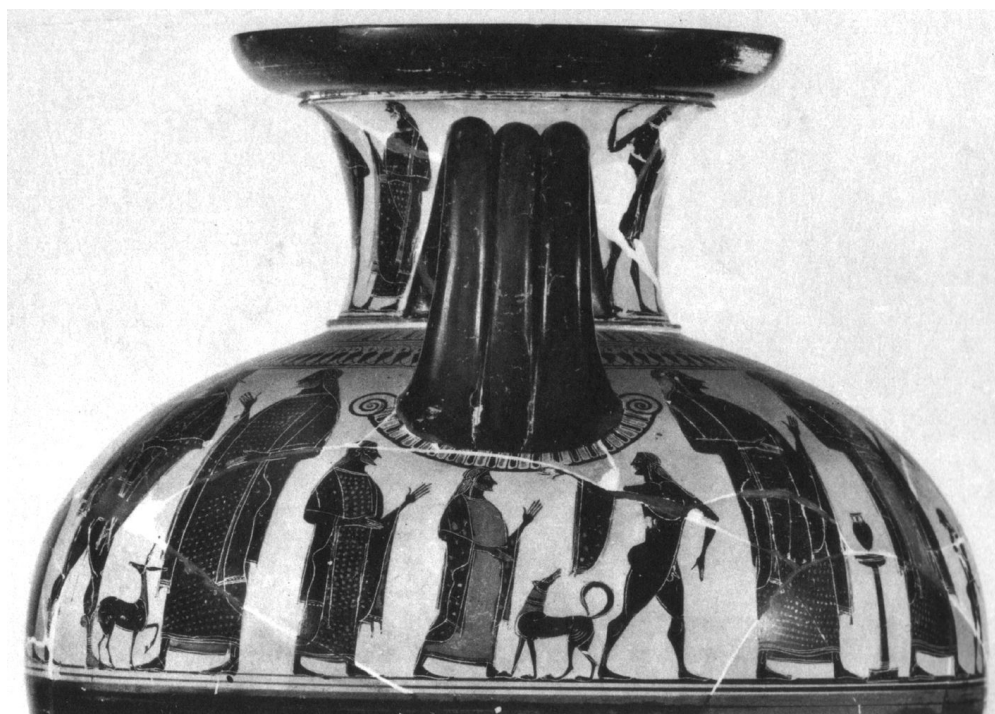
MM 6 (A)



MM 6 (B)



MM 7



MM 8



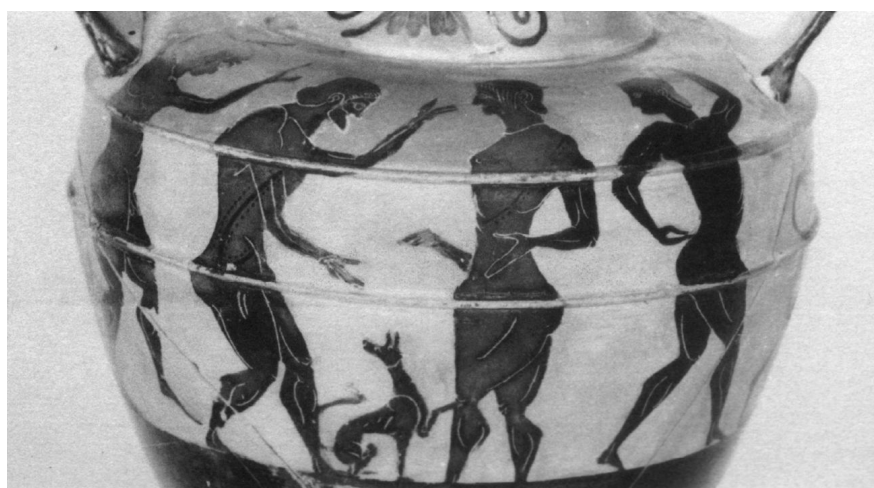
MM 9 (B)



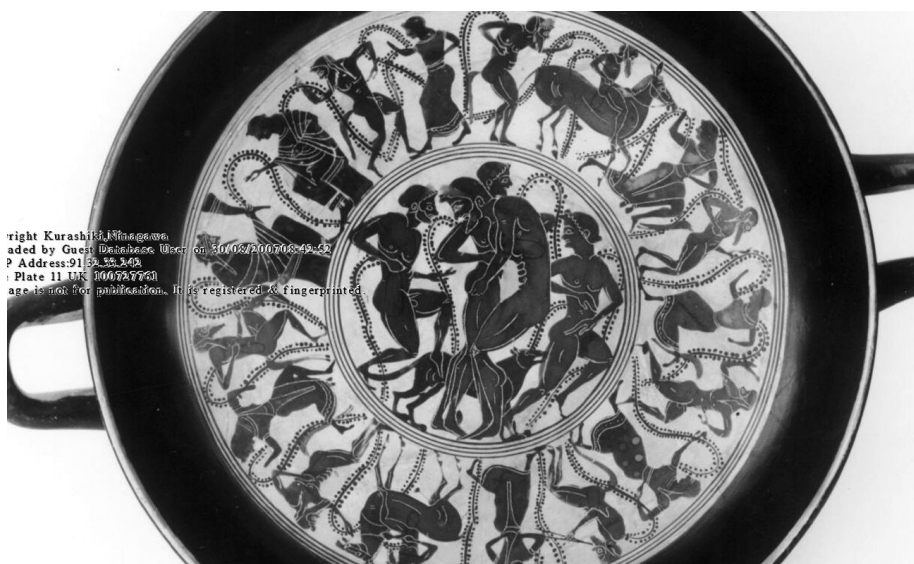


© Copyright Orvieto, Museo Civico  
Downloaded by Guest Database User on 30/08/2007 08:52:52  
From IP Address: 91.52.53.242  
Licence Plate M UK 100727997  
This image is not for publication. It is registered & fingerprinted.

MM 10 (B)



MM 11 (B)

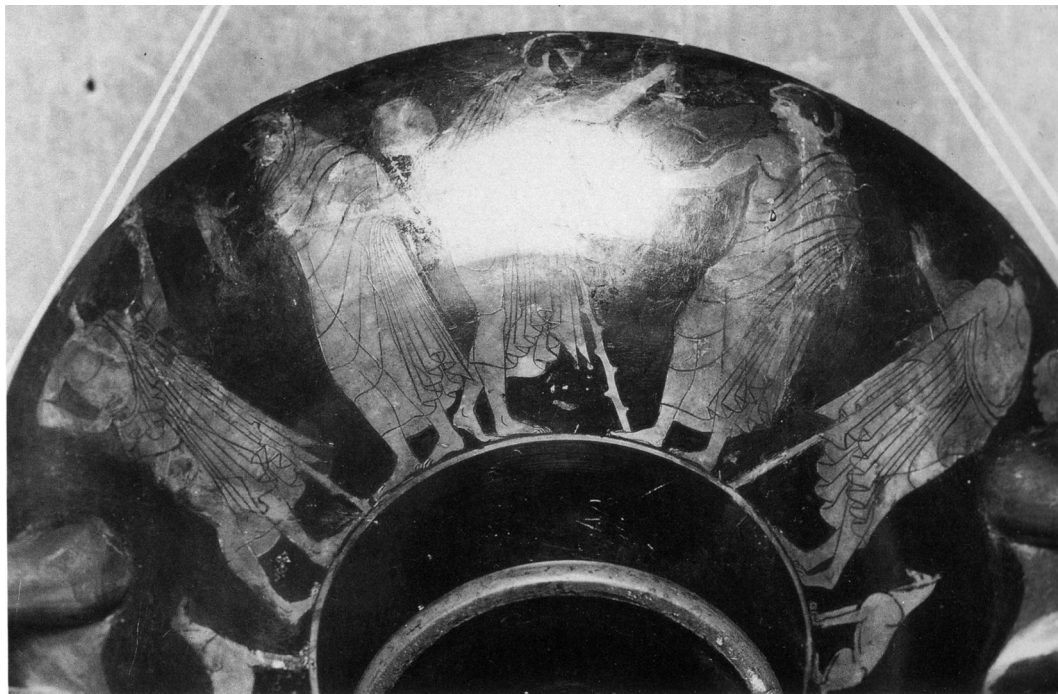


right Kurashiki, Shikoku.  
aded by Guest User on 30/08/2007 08:45:42  
P Address: 91.59.33.45  
Plate 11 UK 100757741  
age is now for publication. It is registered & fingerprinted.

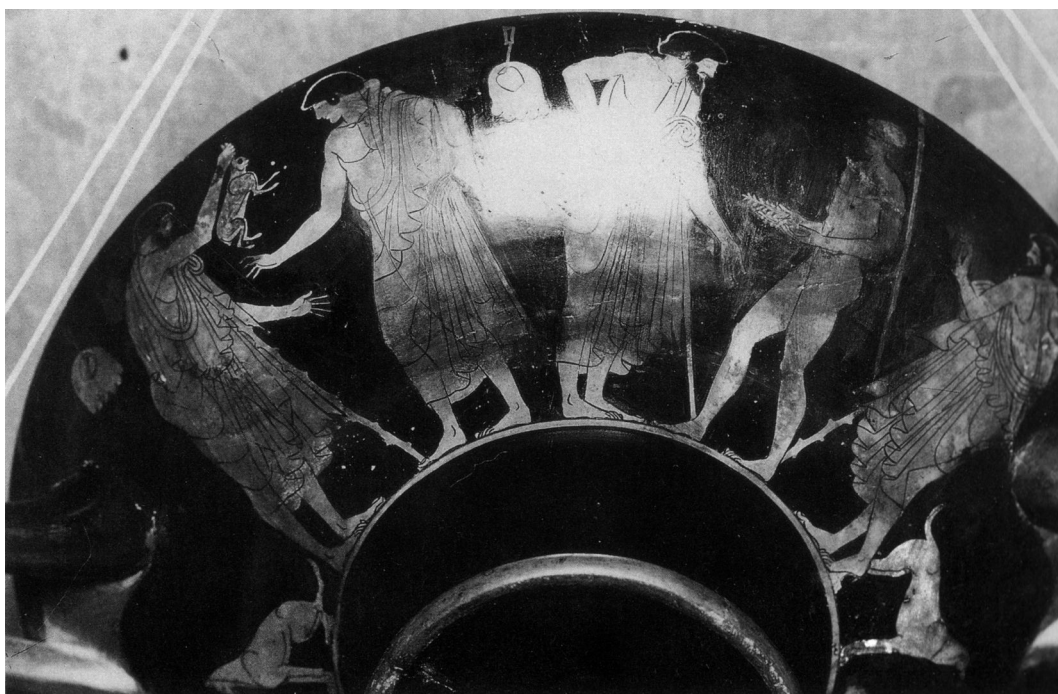
MM 12



MM 13



MM 14 (A)



MM 14 (B)



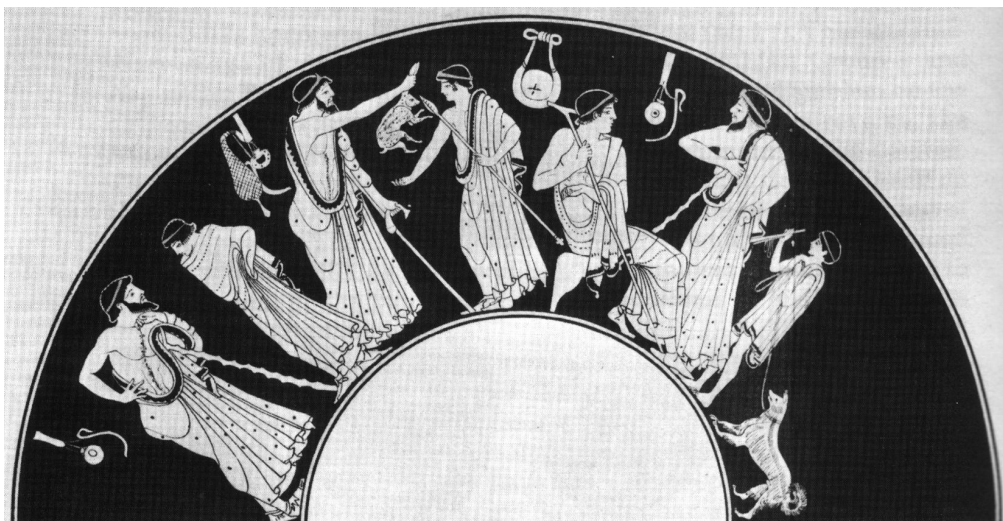
MM 15 (B)



MM 15 (I)



MM 15 (A)



MM 16 (A)



MM 16 (I)



MM 16 (B)

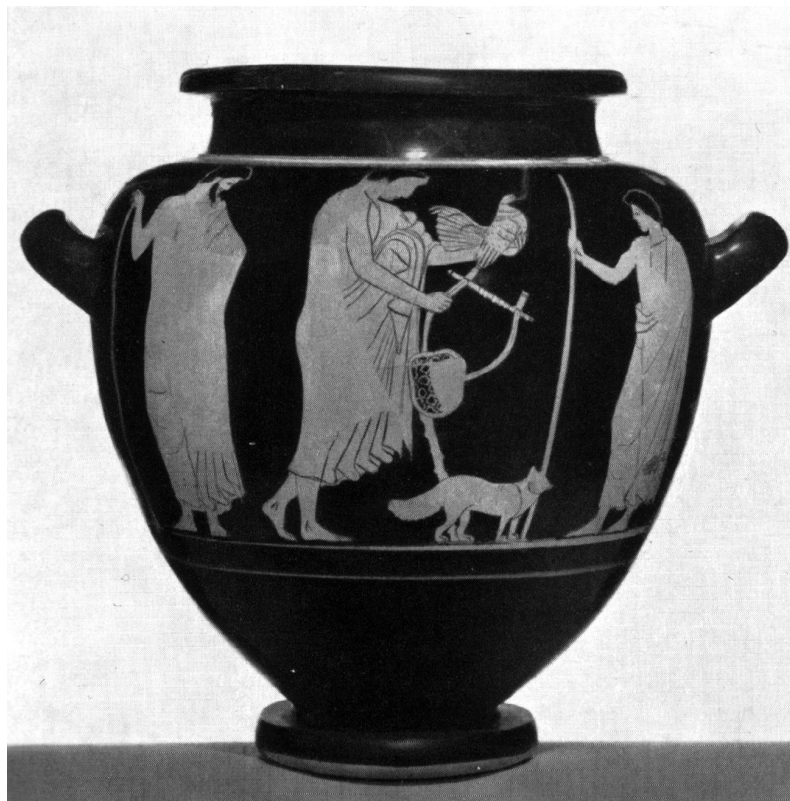




MM 17 (A)



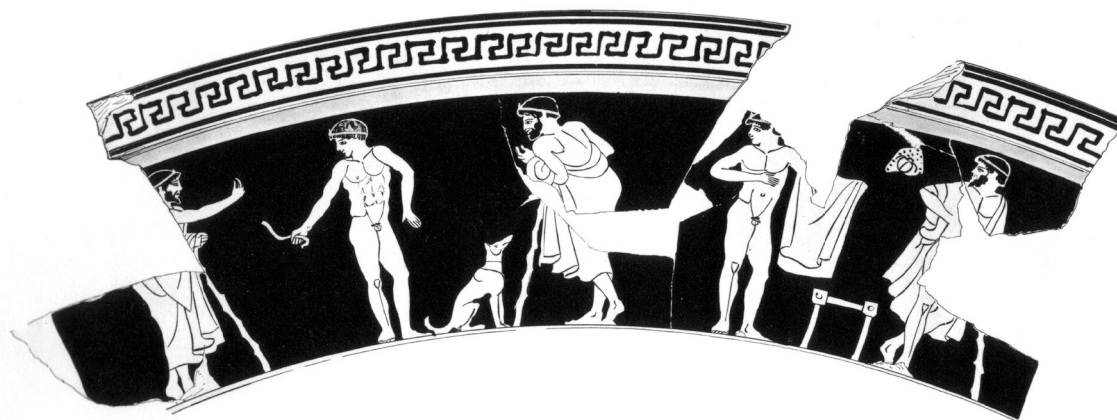
MM 17 (B)



MM 18 (A)



MM 18 (B)



MM 19



MM 20 (A)





FF1



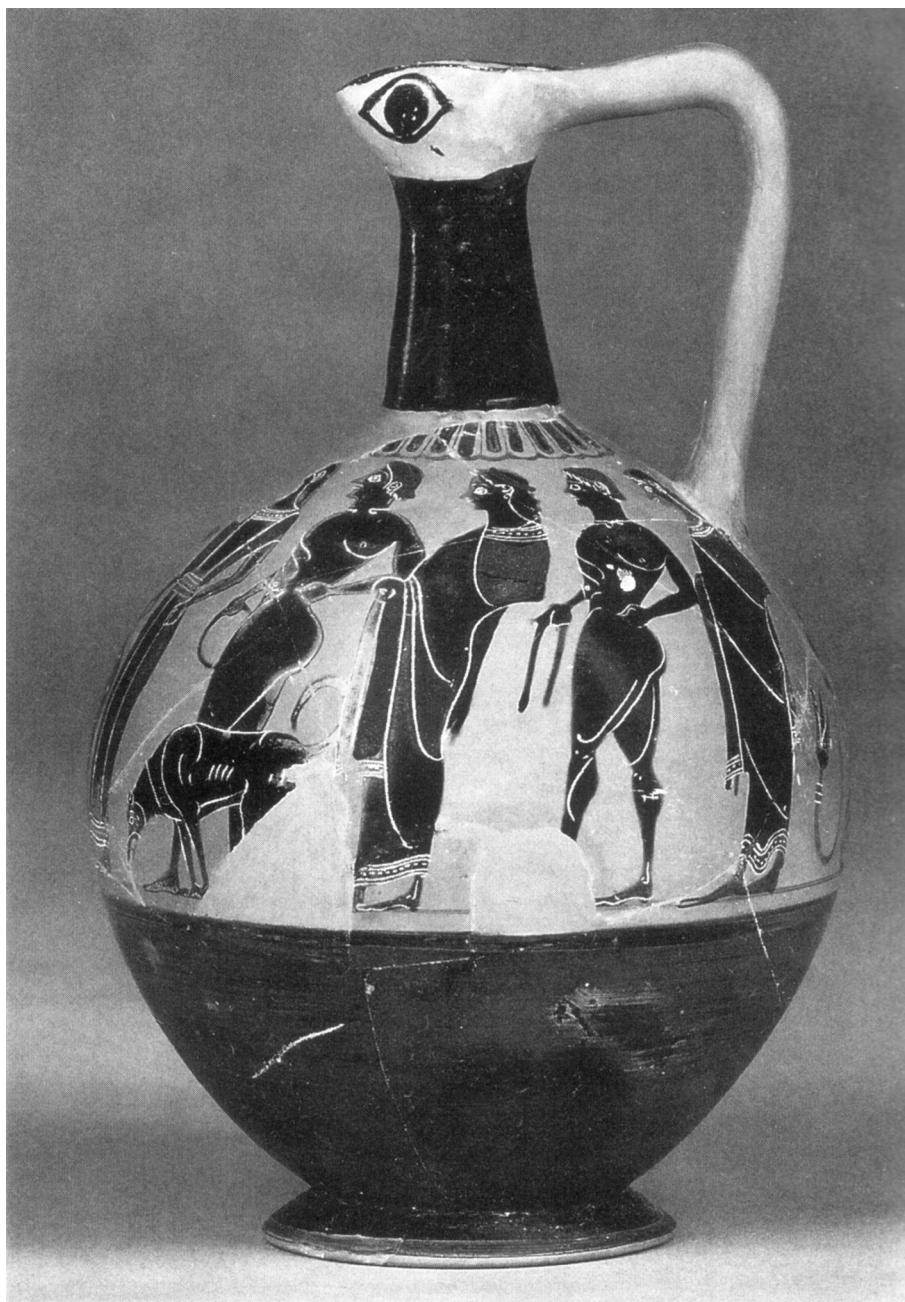
FF1



FF 2 (B)



FF 2 (A)



FF 3



FF 4 (A)



FF 4 (B)





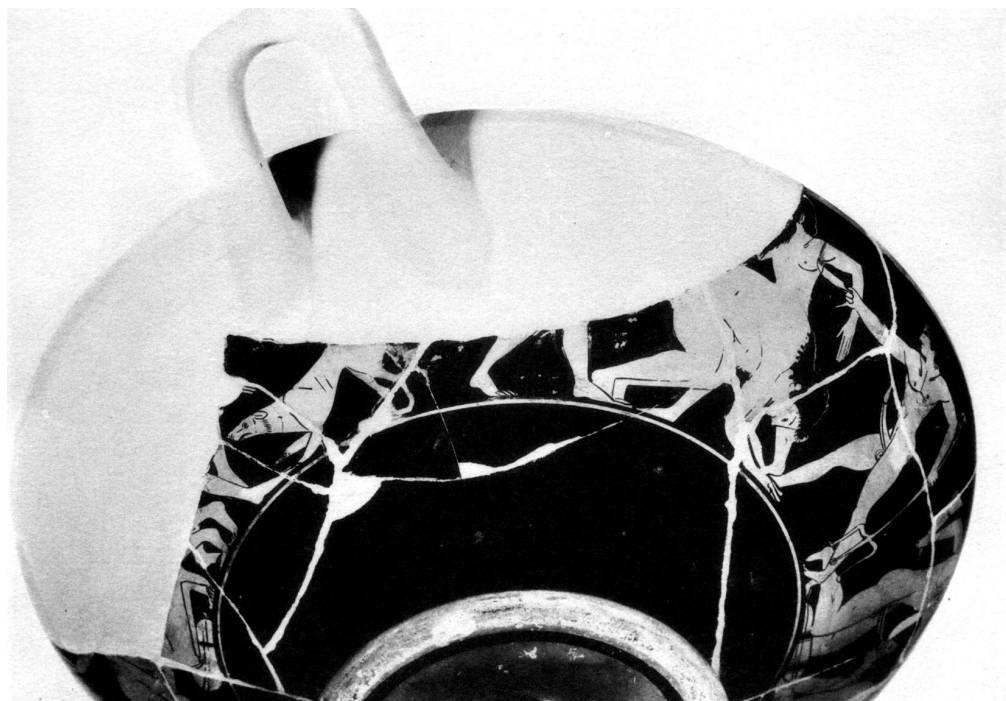
FF 5 (B)



FF 5 Detail



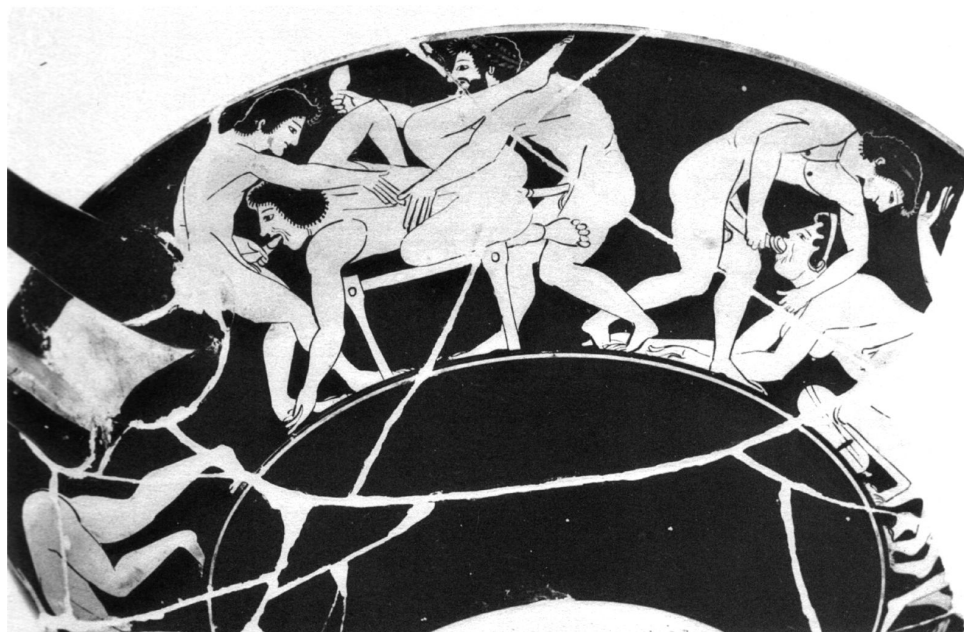
FF 5 (B)



FF 6 (B)



FF 6 (B)



FF 6 (I)



FF 7



FF 8

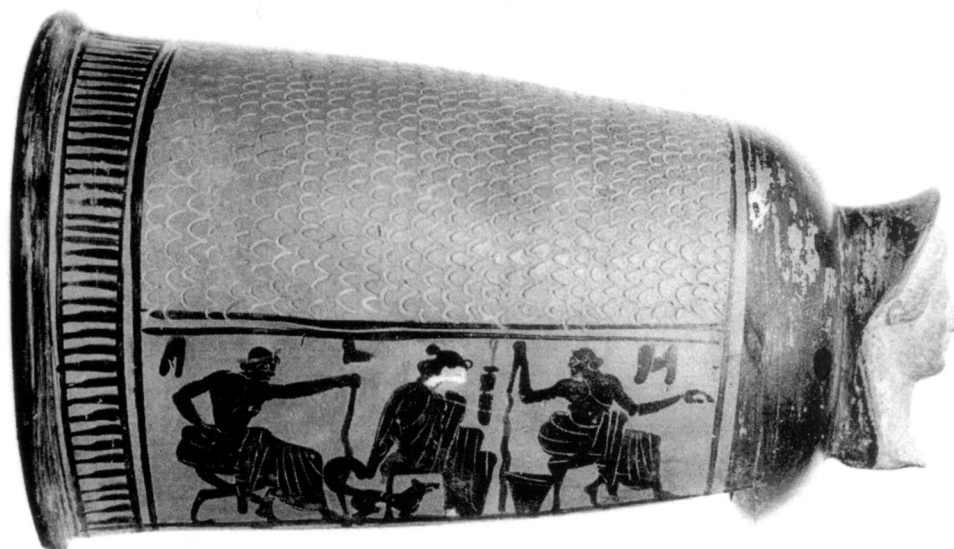


FF 8

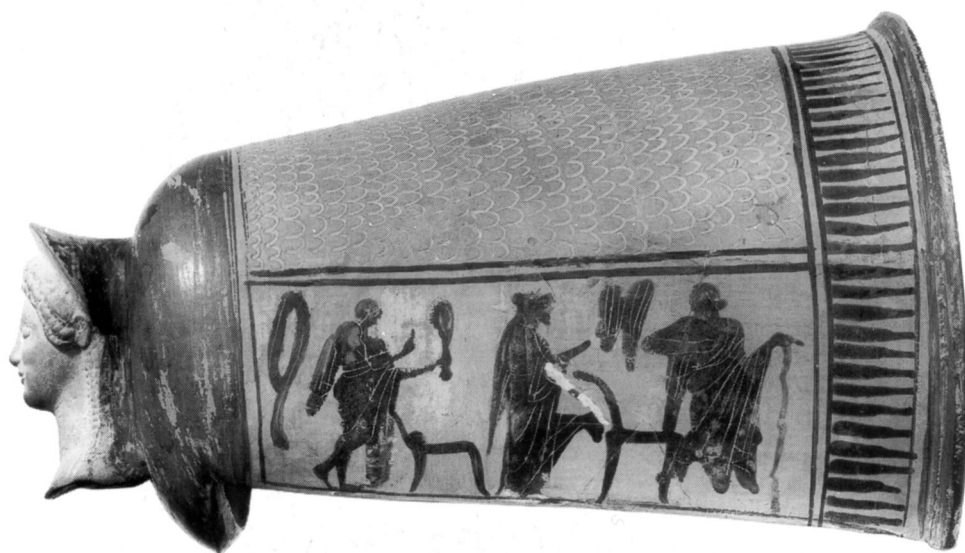




FF 9



FF 10 (B)



FF 10 (A)



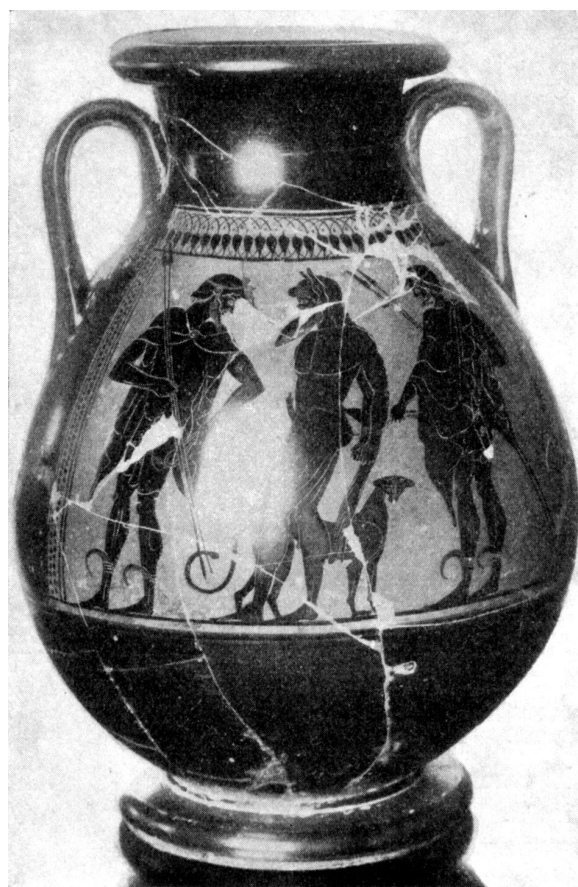
FF 11



FF 16



FF 12 (A)

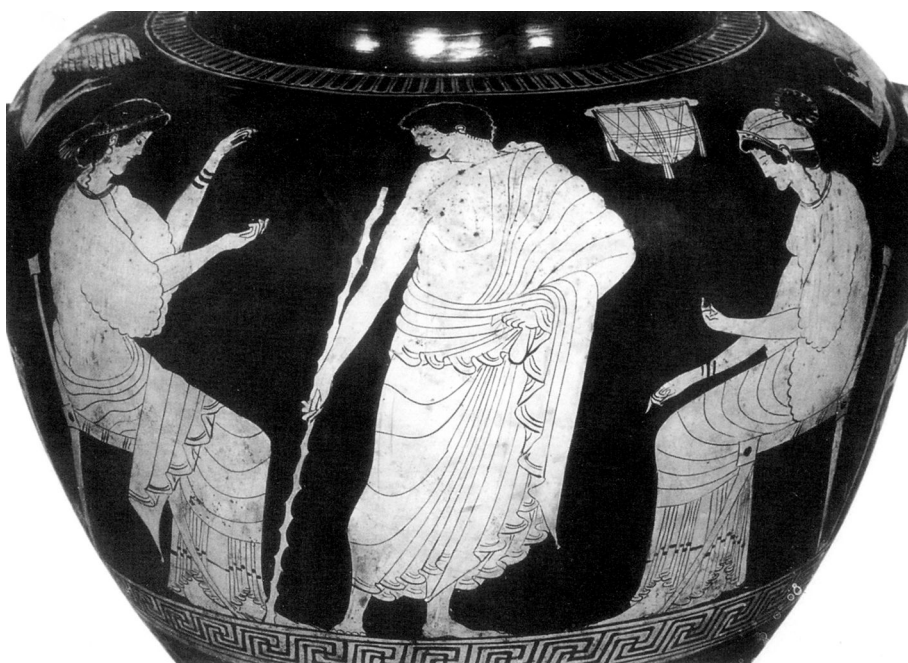


FF 12 (B)





FF 13 (A)



FF 13 (B)



FF 14



FF 15



FF 17





FF 18



FF 18



FF 18



FF 19



FF 19



FF 20



FF 20



F1 (B)



F1 (A)





F2



F3



F4 (A)



F5





F6



F6



F7



F8

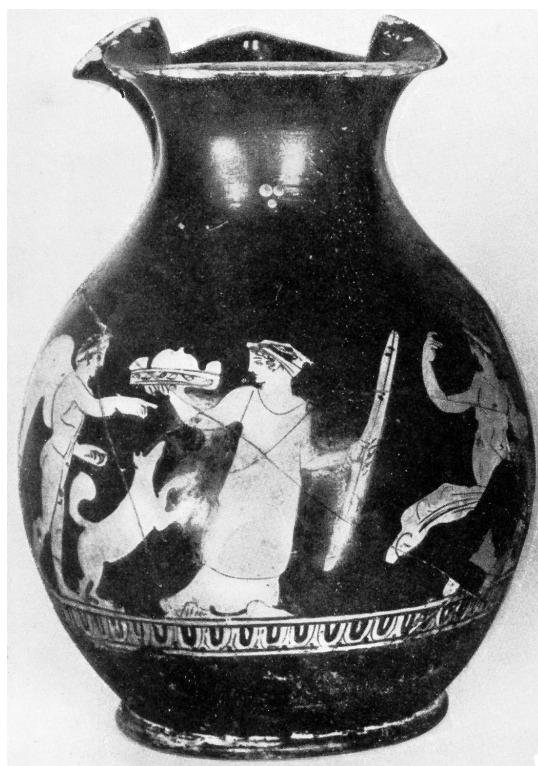


F8

Z40



F9



F11

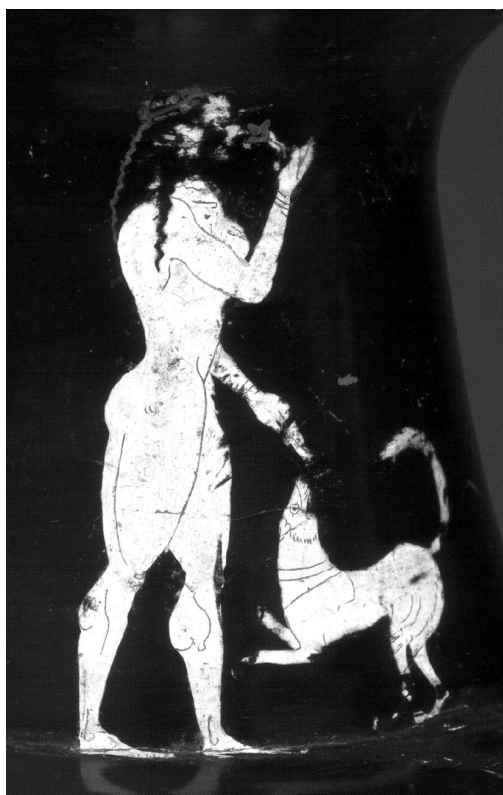


F10

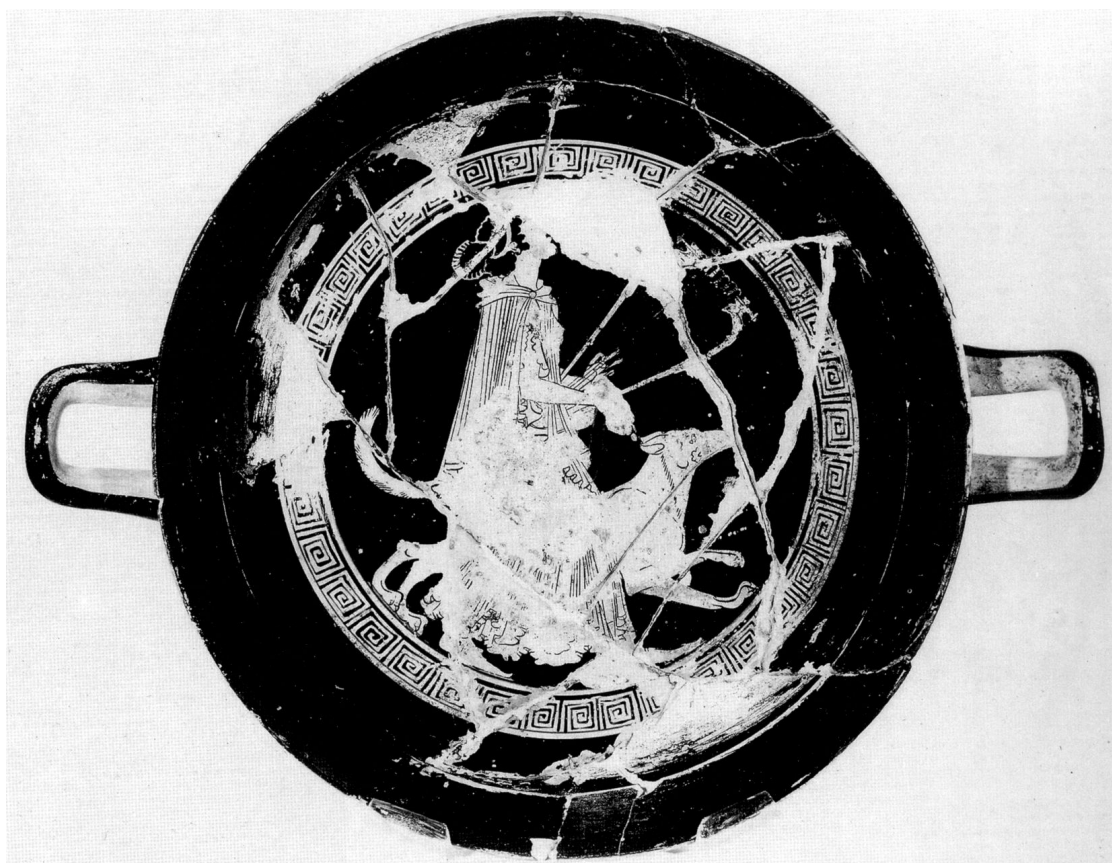




EF 1 (B)



EF 1 (A)



EF 2



EF 3



EF 4



EF 5



EF 9



EF 6





EF 7



EF 8