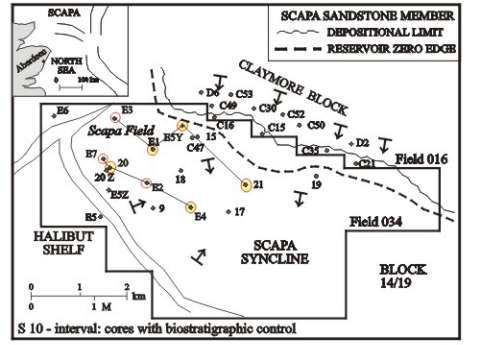
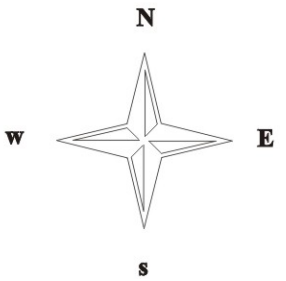
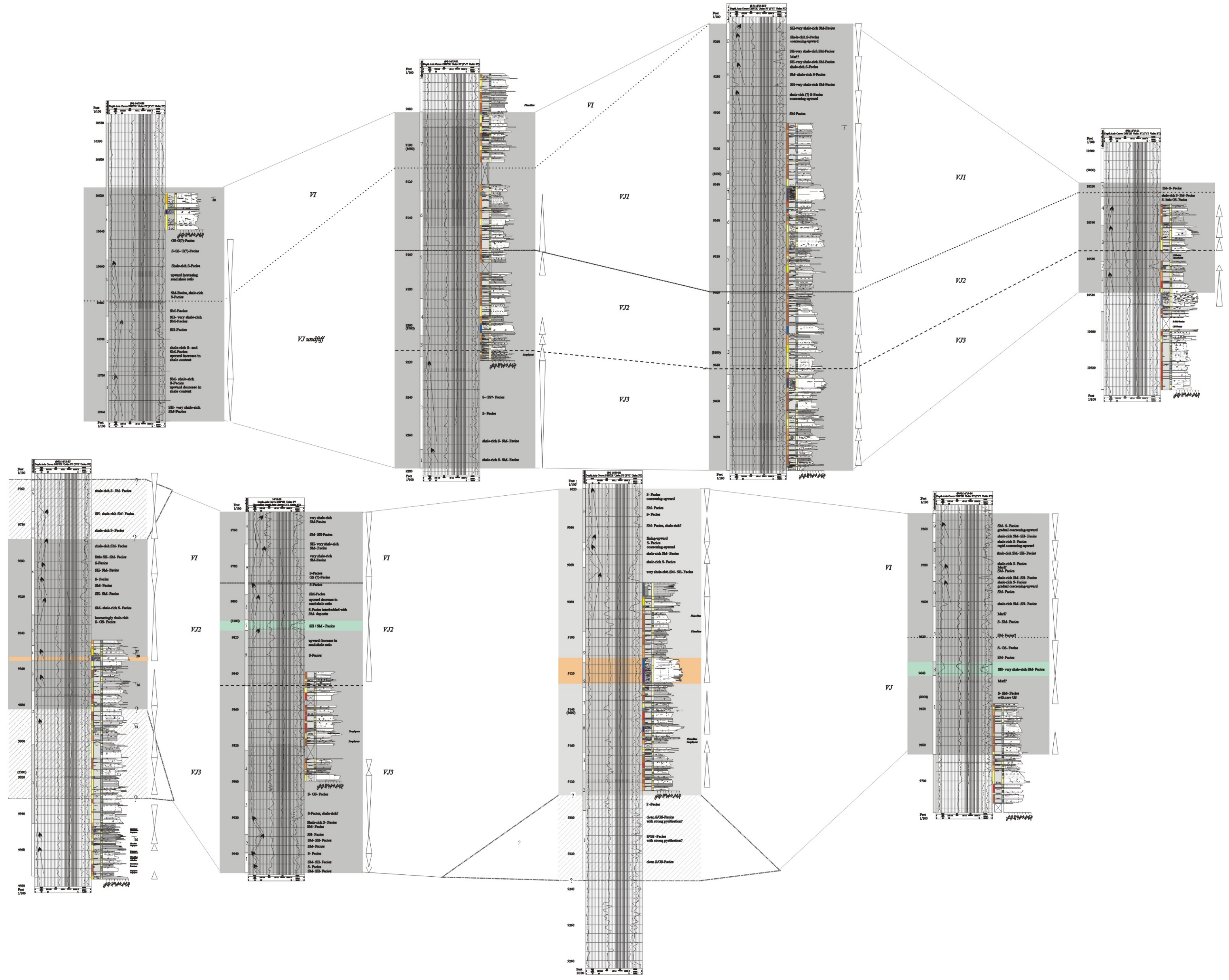


Scapa Sandstone Member - S10 interval lithology and correlation chart



Legend		Lithofacies - colour code	Peace code
[Grey box]	S10	G	G1
[Dotted line]	Top VJ1 / top undiff VJ	G	G2
[Dashed line]	Top VJ2	G	G3
[Dash-dot line]	Top VJ3	G	G4
[White box]	electrofacies	OS	OS1
[Light grey box]	sand	OS	OS2
[Medium grey box]	pebbly-rich	OS	OS3
[Dark grey box]	shale	OS	OS4
[Light grey box]	ms = medium sand	OS	OS5
[Medium grey box]	cs = coarse sand	OS	OS6
[Dark grey box]	vs = very coarse sand	OS	OS7
[Light grey box]	vs = very fine sand	OS	OS8
[Medium grey box]	fs = fine sand	OS	OS9
[Dark grey box]	pb = pebble	OS	OS10
[Light grey box]	ms = medium sand	OS	OS11
[Medium grey box]	cs = coarse sand	OS	OS12
[Dark grey box]	vs = very coarse sand	OS	OS13
[Light grey box]	vs = very fine sand	OS	OS14
[Medium grey box]	fs = fine sand	OS	OS15
[Dark grey box]	pb = pebble	OS	OS16
[Light grey box]	ms = medium sand	OS	OS17
[Medium grey box]	cs = coarse sand	OS	OS18
[Dark grey box]	vs = very coarse sand	OS	OS19
[Light grey box]	vs = very fine sand	OS	OS20
[Medium grey box]	fs = fine sand	OS	OS21
[Dark grey box]	pb = pebble	OS	OS22

Sedimentary structures		Cementation	
[Symbol]	cross-bedding	[Symbol]	non-carbonate cemented
[Symbol]	parallel lamination	[Symbol]	light-moderate carbonate cementation
[Symbol]	ripple lamination	[Symbol]	strongly carbonate cemented / nodules formation
[Symbol]	wavy lamination	[Symbol]	pyrite formation
[Symbol]	contorted bedding	[Symbol]	
[Symbol]	no apparent bedding	[Symbol]	
[Symbol]	load structures	[Symbol]	
[Symbol]	scours	[Symbol]	
[Symbol]	erosive contact	[Symbol]	
[Symbol]	shaly contact	[Symbol]	
[Symbol]	wavy contact	[Symbol]	
[Symbol]	pebbles	[Symbol]	
[Symbol]	bioturbation	[Symbol]	
[Symbol]	coal fragments	[Symbol]	
[Symbol]	shale clasts	[Symbol]	
[Symbol]	concretions	[Symbol]	
[Symbol]	fractures	[Symbol]	
[Symbol]	shells / fragments	[Symbol]	
[Symbol]	water escape structures	[Symbol]	

Cementation		Correlations based on:	
[Symbol]	non-carbonate cemented	[Symbol]	Lithofacies association
[Symbol]	light-moderate carbonate cementation	[Symbol]	Wireline response
[Symbol]	strongly carbonate cemented / nodules formation	[Symbol]	
[Symbol]	pyrite formation	[Symbol]	
[Symbol]		[Symbol]	
[Symbol]		[Symbol]	
[Symbol]		[Symbol]	
[Symbol]		[Symbol]	