

Medizinische Universitätsklinik und Poliklinik Tübingen

Abteilung Innere Medizin III

Kardiologie und Kreislaufkrankungen

**Percutaneous therapy for mitral valve regurgitation  
modulates level and phenotype of circulating blood  
cells**

**Inaugural-Dissertation  
zur Erlangung des Doktorgrades der Medizin**

**der Medizinischen Fakultät  
der Eberhard Karls Universität  
zu Tübingen**

**vorgelegt von**

**Zhang, Yingying**

**2017**

Dekan: Professor Dr. I. B. Autenrieth

1. Berichterstatter: Professor Dr. H.F. Langer

2. Berichterstatter: Privatdozentin Dr. S. Autenrieth

Tag der Disputation: 26.09.2017

## TABLE OF CONTENTS

Abbreviations List.....	3
1. Introduction.....	5
1.1 Heart failure.....	5
1.1.1 Heart failure – a complex and multifaceted disease with increasing medical and socioeconomic relevance.....	5
1.2 Immune response involve in the progress of heart failure.....	7
1.2.1 Relevance of immune mechanisms in heart failure – experimental evidence.....	7
1.2.2 Relevance of immune mechanisms in heart failure - clinical evidence.....	13
1.2.3 Antigen presenting cells and their role in heart failure.....	15
1.3 Available treatment options.....	18
1.4 Aims of study.....	20
2. Material and Methods.....	22
2.1 Study population.....	22
2.2 Identification of DC precursors by flow cytometry.....	22
2.3 Analysis of DCs surface markers with Imaging Flow Cytometer.....	24
2.4 Multiplex enzyme linked immunosorbent assays.....	26
2.5 Clinical parameters.....	26
2.6 Statistical analysis.....	27

3. Results.....	28
3.1 Baseline characteristics.....	28
3.2 FACS analyses of circulating DCs.....	30
3.3 Analysis for phenotype of DC precursors.....	32
3.4 Correlations of circulating mDCs with CD40 and HLA-DR.....	36
3.5 Improvement of clinical parameters.....	37
3.6 Correlation analysis of circulating mDCs and heart failure parameters.....	39
4. Discussion.....	41
5. Summary.....	45
6. Zusammenfassung.....	47
7. References.....	49
8. Declaration.....	60
9. Acknowledgment.....	61

## Abbreviations List

HF	heart failure
MI	myocardial infarction
LV	left ventricle
MR	mitral regurgitation
AS	aortic stenosis
DCM	dilated cardiomyopathy
ACS	acute coronary syndromes
TLR4	toll-like receptor 4
TLRs	toll-like receptors
PRRs	pattern recognition receptors
PAMPs	pathogen associated molecular patterns
DAMPs	damage associated molecular patterns
NF- $\kappa$ B	nuclear factor kappa-light-chain-enhancer of activated B cells
IFR	interferon regulatory factor transcription factors
AngII	angiotensin II
TAC	transverse aortic constriction
NLRP3	NOD-like receptor family pyrin domain containing protein 3
TNFR1	TNF receptor 1
EMB	endomyocardial biopsy
DCs	dendritic cells

mDC	myeloid dendritic cell
pDC	plasmacytoid dendritic cell
EAM	autoimmune myocarditis
CAD	coronary artery disease
IVIG	intravenous immunoglobulin
CRT	cardiac resynchronization therapy
PMVR	percutaneous mitral valve repair
RT	room temperature
PBMC	peripheral blood mononuclear cells
ELISA	enzyme linked immunosorbent assays
6MWT	6-minute walk test
LVEDD	left ventricular end diastolic diameter
SSC	side scatter
FSC	forward scatter
TTE	transthoracic echocardiograph
TEE	transesophageal echocardiography
IL6	interleukin-6
CRP	C-reactive protein

## **1. Introduction**

### **1.1 Heart failure**

Heart failure (HF) is considered as the inability of the heart to transport sufficient amounts of blood to meet the demands of body at normal filling pressures, finally causing a complex and severe disease syndrome. Despite remarkable progress in HF therapy regarding both treatment and prevention, the prognosis of patients after the first hospital admission is still far from favorable, as it is followed by repeated and prolonged hospitalization, and the mortality of HF within 5 years is up to 50% (1). Hence, better understanding of the pathophysiological mechanisms for HF may accelerate investigations, medical progress and therapy for acute and chronic disease.

#### **1.1.1 Heart failure – a complex and multifaceted disease with increasing medical and socioeconomic relevance**

Several underlying causes and involved mechanisms are known for the development of HF, which can be classified into categories. Among all, ischemia induced by myocardial infarction (MI) or chronic ischemic cardiomyopathy in conjunction with further risk factors such as diabetes is the most common cause for the progression of left ventricle (LV) dysfunction and HF (2). The predominant mechanism is cell death due to lack in tissue supply with oxygen, nutrients as well as the removal of noxen generated during the metabolic process. In the

similarly prevalent cause for HF in elder patients is caused by chronic overstraining of the heart muscle machinery. Most commonly, this mechanical stress is derived from arterial hypertension or heart valve dysfunction such as mitral regurgitation (MR) or aortic stenosis (AS). These processes result in alterations of the heart structure such as ventricular dilation in the case of volume overload or hypertrophy in the case of pressure overload or combination of both. Commonly such structural alterations are associated with increase in cardiac fibrosis, and eventually progress into LV dysfunction (3,4). There are also diseases resulting in heart failure, which affect more commonly younger patients including autoimmune and microbial infections inflicting damage to the heart muscle cells mediated either directly or through innate and adaptive immune responses triggered by the infectious agent (5,6). Last but not least, genetic diseases such as dilated cardiomyopathy (DCM) are a and rather heterogeneous not well understood scenario with heart failure (7).

The two main different types of HF is chronic HF and acute HF. Chronic HF is more common and symptoms appear slowly over time and worsen gradually with the underlying mechanisms mentioned above. This situation is of particular clinical and therapeutic importance as the majority of patients who are diagnosed with chronic HF are those who most likely had HF for some time, and presented to hospital only when they became symptomatic. (8) Acute HF can be determined as a new symptom or modifies the course of chronic HF and



worsens outcome via a combination of potential mechanisms, including noncompliance with medication, aggravated hypertension, acute coronary syndromes (ACS), arrhythmias and systemic inflammation, (9) which requires urgent therapy. Moreover, they are considered as chronic but no longer as acute HF once in stabilization after the initial management. (10)

Recent years, more attentions are focus on the correlation between socioeconomic status and disease prognosis. Environmental and social contexts play a vital role in health outcomes (11), moreover, in industrial countries, socioeconomic imbalance regarding cardiovascular disease present a major and ongoing challenge to public health. (12) In HF patients, socioeconomic status also displays as predictors of incident HF, for instance, higher rehospitalization, incidence and mortality rate is seen in patients under low socioeconomic situation. (13,14)

## **1.2 Immune response involve in the progress of heart failure**

### **1.2.1 Relevance of immune mechanisms in heart failure – experimental evidence**

Though different mechanisms of HF, there is common to each type with a correlation between elevated circulating pro-inflammatory cytokines and adverse clinical outcomes. (15) However, different to immune based, immune response acts as the secondary response in the other causes.

Immune response not only plays as a protective response to organism injuring, but also plays an important role in the progress of atherosclerosis (16,17). The complicated nature of immune response made it a double-edged sword. In ischemic based heart failure, for instance, in the event of MI, inflammatory cells infiltrate into the infarct area to initiate the reparative process triggered by ischemia and necrotic myocardial cells. In this phase, irreparably damaged or dead cells were removed, and infarct was repaired to maintain cardiac integrity by scar formation. Therefore, the infiltration of inflammatory cells to the injured tissue is considered to be an essential participator for wound healing. The sustained inflammation beyond the initial reparative process, however, may later extend into the non-infarct remote myocardium, subsequently plays a role in the long-term adverse cardiac remodeling. (18,19) In contrast, few studies focus on the role of inflammation in the chronic setting of ischemic relevant chronic HF, though it plays an important role for cardiac remodeling. To point out, the role of toll-like receptor 4 (TLR4) in the progress of chronic HF has been demonstrated by recent animal data. (20) TLR4 is a member of toll-like receptors (TLRs) which is response for activating the innate immunity. TLRs belong to pattern recognition receptors (PRRs), (21) that could identify specific ligands and involve in defense against damage associated molecular patterns (DAMPs) or pathogen associated molecular patterns (PAMPs) which derive from damaged myocardium and pathogens, respectively. (21) The activated signaling

cascades activate nuclear factor kappa-light-chain-enhancer of activated B cells (NF- $\kappa$ B), interferon regulatory factor transcription factors (IRF) and activator protein 1, that lead to the expression of inflammatory genes. (22) (Figure 1) Many stressors, including ischemia, can stimulate cardiomyocytes to release DAMPs and activate the above signaling that initiate innate immunity. Furthermore, TLR4 upregulation persists in chronic HF, and LV function could be improved by the blockade of TLR4 signaling during chronic phase. (20)

LV overload by mechanical stress can result in myocardial inflammation which is triggered by leucocyte infiltration and cardiac pro-inflammatory cytokines release, that mostly indicate with two main mouse models, transverse aortic constriction (TAC) and angiotensin II (AngII) infusion. Macrophages have been shown to mediate hypertension, cardiac remodeling and fibrosis after TAC or AngII infusion, and depletion of macrophages resulted in reduced cardiac fibrosis and decreased LV hypertrophy. (23,24) The pathological effects of macrophages are in part dependent on cytokines release (25), but the role of cytokines in regulation of cardiac hypertrophy remains disputable. For example, inhibition of IL-6 has been shown to reduce fibrosis and cardiac hypertrophy after AngII infusion (26), but it has no effect after TAC (27), moreover, deletion of GP130, which is recognized as part of IL-6 receptor complex, surprisingly impairs cardiac function leading to dilated cardiomyopathy and increase mortality. (28) This indicates the importance of cause and the temporal aspect of disease

progression after the different initial insults. Similarly, in chronic HF model of mechanical stress by 6 weeks high salt diet, depletion of monocytes/macrophages for additional 4 weeks prevents LV remodeling and fibrosis, and preserves cardiac function. (24) However, due to the challenge to establish MR model with small animals, the role of inflammation for volume overload HF remains rare.

Myocarditis is interpreted as an inflammatory disease of myocardium, which can be acute, subacute or chronic, consistently, each type can be inferred as HF with LV dysfunction by means of echocardiography. (29) Different to other causes of HF, inflammation is involved in this type as the leading response. Viral infection is demonstrated to constitute the most prevalent cause of myocarditis among all the causes. (29) Onset of viral infection, the myocardial tissue triggers the activation of the host defense immune response, which is hallmarked as the infiltration of natural killer cells as well as macrophages, subsequently by virus specific T lymphocytes. (6) The initial activation of immune response is beneficial to the host by attenuating viral proliferation, however, the persistent and excessive immune response conveys harmful consequences by contributing to the progression of myocarditis and DCM. (30) Besides, special statement that damaged cardiomyocytes can lead to the release of intracellular proteins (e.g. myosin, actin, troponin, tropomyosin,  $\beta$ 1-adrenoreceptors and muscarinic receptors) which serve as self-antigens in order to provoke humoral response

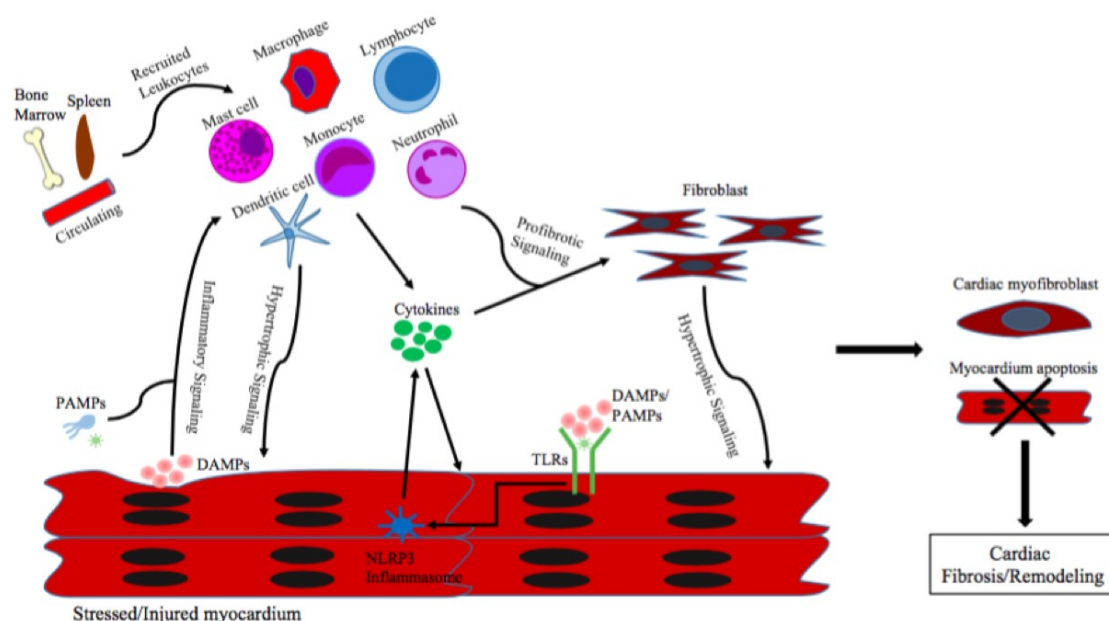
result in the generation of auto-antibodies, and this takes an important part in the initiation and progression of DCM by aggravating myocardial contractile dysfunction. (31) On the other hand, as observed in the cardiac complications from some systemic autoimmune disorders, dysregulated humoral response itself can directly cause the production of auto-antibodies. The pathogenic potential of auto-antibodies has been proved to lead to ventricular dilation and dysfunction in animal models of antibodies transfer or by active immunization that directly against corresponding epitopes. (32–34)

Genetics also contribute to the development and progression of DCM. (7) Unfortunately, prior studies of transgenic mice model for human familial HF do not often explore the role of inflammatory cells and pathways that may potential involve in the progress of the disease. Given the association between cardiomyocytes fibrotic pathways and immune response (21), it is likely that immune response may also modulate the fibrotic progression to genetic abnormalities altered cardiomyocyte function that leading to HF development, hence, this needs further investigation.

Furthermore, in recent years, growing evidence come out to support the role of gut in the progression of HF. The theory assumed intestinal edema and ischemia induced by decreased cardiac output could lead to enhanced intestinal permeability, and lead to the entry of lipopolysaccharides into circulation that

produced by gram-negative bacteria. (35,36) Moreover, lipopolysaccharides serves as type of PAMPs could initiate innate immunity (Figure1) that may contribute to the progression of LV dysfunction and HF syndrome. Indeed, selective elimination of intestinal aerobic gram-negative bacilli resulted in decreased fecal endotoxin concentration, monocyte expression and intracellular pro-inflammatory cytokines production in patients with severe HF. (37) This provided proof for the gut hypothesis, although this was not successful to display significant changes in circulating pro-inflammatory cytokines and endotoxin levels. (37)

**Figure 1.**



**Figure 1. Regulation of inflammation in cardiac remodeling**

Myocardium response to stimulation by releasing damage associated molecular patterns (DAMPs), inflammatory cytokines and chemokines. DAMPs or pathogen associated molecular patterns (PAMPs) induce activation and expansion of resident immune cells, and recruit bone marrow derived inflammatory cells from circulation to inflamed tissue leading to the release of inflammatory cytokines. Signals in response to DAMPs/PAMPs via toll-like receptors (TLRs) that activate NOD-like receptor family pyrin domain-containing protein 3 (NLRP3) inflammasome result in the release of inflammatory cytokines. Activated inflammatory cells, cytokines and fibroblasts activate hypertrophic and profibrotic signaling, subsequently lead to cardiac hypertrophy and promote cardiac fibrosis and remodeling.

### 1.2.2 Relevance of immune mechanisms in heart failure - clinical evidence

Elevated inflammatory biomarkers, which includes TNF- $\alpha$ , ST2, IL-6, galectin-3 and pentraxin-3, is a hallmark characteristic for HF. Measurement of biomarkers in HF patients and animal studies has convincingly demonstrated the elevation of inflammatory cytokines during HF progression, and supporting the “cytokine

hypothesis” that inflammation contributes to HF.

The role of several members in the inflammatory cytokine family has to be highlighted. IL-1 $\beta$  following processing by NOD-like receptor family pyrin domain containing protein 3 (NLRP3) inflammasome, involves in bone marrow activation and leads to leucocyte production. (38) In addition, murine studies displayed that TNF- $\alpha$  promotes inflammation and exerts pro-apoptotic effect via the interaction of TNF receptor 1 (TNFR1). (39,40) Alternatively, it has the opposite effect via the interaction of TNFR2. (39,40) Further, ST2 belongs to IL-1 cytokine superfamily and serves as the receptor of IL-33. In response to mechanical stress, cultured myocytes contribute to secrete ST2 and thus, ST2 represent a marker for inflammation and mechanical stress. (41) Moreover, galectin-3 belongs to the lectin family. In response to damaged cells or injured tissue, macrophages release galectin-3 that involves in the activation of fibroblast and lead to the formation of fibrosis. (42) Furthermore, as mentioned above, function of IL-6 in the progress of HF is controversial. In contrast to other cytokines, IL-10 serves as a major anti-inflammatory cytokine, is proved to reduce macrophage accumulation (43) and to reduce inflammatory cytokine expression via suppression of NF- $\kappa$ B signaling (44), leading to attenuated LV remodeling.

In addition, elevated levels of circulating pro-inflammatory cytokines do not only associate with disease severity, but also predict the mortality of HF patients. For



example, circulating levels of IL-6, TNF, TNFR1 are demonstrated to correlate to poorer survival rate of HF patients. (45)

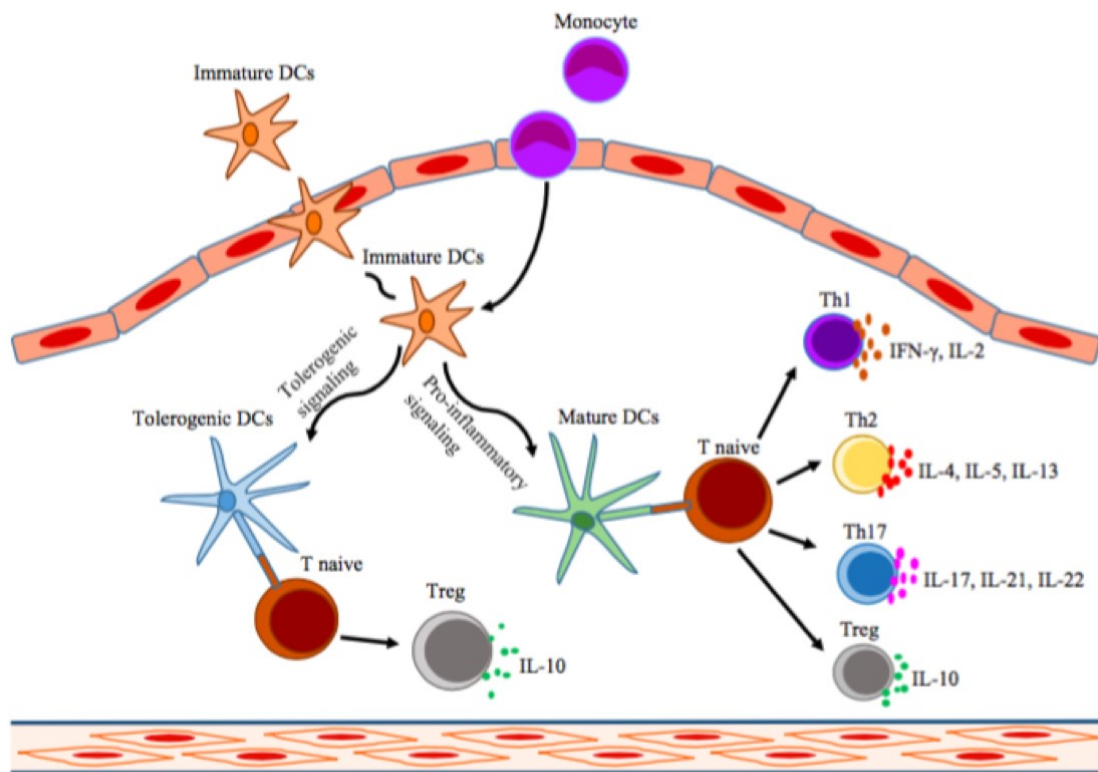
Clinically, diagnosis of dilated cardiomyopathy (DCM) in HF patients with endomyocardial biopsy (EMB) is recommended by present guidelines for both diagnosis and treatment of HF (10). In biopsy, myocarditis is indicated as the presence of inflammatory cells, fibrosis and tissue necrosis. During acute inflammatory disease courses, EMB often shows focal or diffuse lymphocytes and/or macrophages infiltration, but rarely eosinophils or giant cells. (46) In patients with DCM and chronic HF, up to 30% of EMB is seen with inflammation. (46) Whereas compare to acute cases, there is lower number of inflammatory cells, and they distribute in a more diffuse manner. In addition, the presence of cardiomyocytes hypertrophy, scarring and interstitial fibrosis are the features as symbol of lost myocardium. (46)

### **1.2.3 Antigen presenting cells and their role in heart failure**

Dendritic cells (DCs) are central to immune activation as their capacity to induce naive T cells activation so that to initiate adaptive immune response, (Figure 2) as well as their critical role in innate immunity. (47) In the blood circulation, two major types of DCs with different functions have been identified, the so called myeloid dendritic cells (mDCs) and plasmacytoid dendritic cells (pDCs). In human, mDCs mostly express CD1c and CD11c, which usually are activated by

bacterial products and functional for TLR2 and TLR4; pDCs mostly express CD303 and CD123, and is respond to viral infections that major activate TLR9. (47,48)

**Figure 2.**



**Figure 2. Role of dendritic cells(DCs) in inflammatory disease**

DCs could recruit from circulation or proliferate from monocytes to the inflamed tissue. In the absence of inflammation, DCs may induce tolerance by presenting autoantigens and environment antigens to the naive T cells via MHC class II molecules, leading release of IL-10. Meanwhile, DCs may progress to mature state with enhanced antigen presenting capacities, and upregulate their production of cytokines and co-stimulatory molecules. With this, mature DCs can induce the naive T cells to differentiate into different types of CD4<sup>+</sup> T cells, which is responsible for adaptive immune response.

In cardiovascular system, DCs do not only present in myocardium, studies by Steinman et al. firmly demonstrated that DCs localized in aortic wall and cardiac valves as well (49). The turbulent flow by aortic wall and cardiac valves may lead DCs to accumulate and capture disease-related pathogens and present to T cells (49), accordingly take part in the progress of relevant diseases. Study with acute myocardial ischemia mouse model showed that ablation of DCs enhanced monocyte/macrophage infiltration and abundance of inflammatory cytokines, led to a modulation of LV remodeling and deterioration of LV function. (50) Additionally, the role of DCs in autoimmune myocarditis has been recognized (5), and its deterioration to DCM is demonstrated in the experimental autoimmune myocarditis (EAM) animal model, however, it comes to controversial conclusions. For example, one study group demonstrated that DCs are responsible for cardiac fibrosis and involved in the progress of HF, (51) but another study group suggested that DCs transfected of herpes virus entry mediator could prevent EAM in mice. (52)

In human, significant reduction of circulating DCs precursors has been reported in HF patients due to dilated and ischemic cardiomyopathy in all stages of disease severity. (53) Study with MI patients displayed the down-regulation of circulating DCs cause by their enhanced recruitment into the inflamed myocardial tissue (54), however, this seems not to be the case in HF. Decreased numbers of DCs were found in a group of DCM patients with heart biopsies, and

this phenomenon indicates an unfavorable correlation with outcome in terms of HF and tissue fibrosis. (55) To the disappointing results, the authors assumed that possibly due to several reasons, for instance, the apoptotic of DCs, insufficient vascularization in the area of infected cardiomyocytes, and/or the immunomodulation led by regulatory T cells. (55)

In addition, immune cells take place in the progress of heart valve dysfunction. (56) In clinical study, inflammatory response firmly negative correlates with LV parameters in valve dysfunction related HF. (57,58) The complex interactions of immune cells in heart valve may involve in valvular disease related HF, and DCs might be the vital participator, however, with further studies required to clarify the crosstalk between DCs and valvular disease related HF.

### **1.3 Available treatment options**

Several therapeutic manners have been proposed to test the principle to interfere with inflammatory pathway of HF patients, however, the results of large studies have produced fairly disappointing results. Statins are widely known agents for inhibiting the formation of low density lipoprotein in patients with coronary artery disease (CAD), but they also exert anti-inflammatory effects through different ways (59,60). Randomized studies with statins to alter inflammation in patients of chronic HF did not show benefit, unless in the subpopulation presence of dyslipidemia or CAD. (39–40) However, in the

retrospective analysis of CORONA study, statin therapy is benefit in patients with increased high sensitive-CRP, who showed no difference in previous CAD and cholesterol level. (63) Nevertheless, prospective randomized trials have to be done to confirm the result. Pro-inflammatory cytokine TNF- $\alpha$  has received much attention as a therapeutic target, in view of its central role in the pathophysiology of HF. Trials with TNF- $\alpha$  inhibitors infliximab and etanercept did not show benefit in HF patients. (64,65) Although trials with pentoxifylline have demonstrated improved HF symptoms and LV function, (66–68) as a nonselective phosphodiesterase inhibitor, the effects of pentoxifylline to HF maybe beyond its anti-inflammatory properties. In addition, intravenous immunoglobulin (IVIG) also serves as a potential tool for HF therapy, as its double effect on the cytokine network. For example, it is confirmed that IVIG could downregulate the pro-inflammatory mediators (such as IL-1), and upregulate the anti-inflammatory mediators (such as IL-10). (69) However, the results came conflicting as well (69–71). Hence, the overall benefit of anti-inflammatory therapy for HF is still unclear.

In addition, several therapeutic manners have been proposed to indirectly interfere the inflammatory pathway of HF patient. Recent years, cardiac resynchronization therapy (CRT) represents a valuable option in the treatment for a subgroup of HF patients, (10) with this, a biventricular pacemaker is implanted to help the heart pump blood through the ventricles to the body more

efficiently. As CRT improved cardiac contraction, increase cardiac output reduces intestine oedema and correct peripheral circulation that reduce inflammatory mediator synthesis, a reduction of inflammatory mediators in CRT treated HF patients were found in several trails, which link to reverse cardiac remodeling and improve LV function. (72–75) However, there are also several studies demonstrated no changes in circulating inflammatory markers (76–78), which might cause by statistical errors from a small study population or heterogeneity between patient groups.

Although many studies and clinical trials regarding treatment target on inflammation in HF, the results remain controversial, which might due to the complex nature of the immune cells, inflammatory cytokines as well as the mechanisms of different HF subtypes. As we gain a greater understanding of immune mediator and their role in cardiac injure and repair, but from the mentioned above, our knowledge is still superficial to date. Hence, more studies have to be carried out, especially regarding chronic HF as it represents most of the cases in clinical HF patients, and inflammation in genetic as well as valve dysfunction related HF, which is scarce studies before. Also a better understanding of the functional implication with the immune mediators in HF may help focus new therapies target in the future.

#### **1.4 Aims of study**

There is emerging evidence that immune response plays a vital role in the progress of LV remodeling, however, data for patients of volume overload HF are not available, so far. Percutaneous edge-to-edge mitral valve repair (PMVR) for patients of MR with MitraClip<sup>®</sup> system represents a good human model to study volume stress to the heart before and after treatment, because compare to the on pump surgery, it avoids the bias caused by the artificial circulation. Since DCs mediate as center of any immune response, we investigated the number and phenotype of DCs precursors in patients underwent PMVR with MR related volume overload HF.

The aims of the thesis were the following:

To show the number change of both mDCs and pDCs in circulating before PMVR and during follow up.

To show the altered phenotype of both mDCs and pDCs in circulating before PMVR and during follow up.

To assess a possible correlation between DCs and clinical parameters.

To investigate an influence of DCs numbers with systemic inflammation status.

To investigate an influence of DCs changing on functional recovery.

## **2. Materials and methods**

### **2.1 Study population**

The study population consisted of 125 patients with grade 3 or 4 MR, who underwent PMVR at the University Hospital, Department for Cardiology and Cardiovascular Medicine, University of Tuebingen. We included 80 patients and re-evaluated them at 6-month follow-up. 45 patients were lost to follow up, as 35 patients passed away and 10 patients opted to withdraw from the study. Venous blood samples of 11 healthy donors served as controls. All the patients were informed and agreed before the blood taken, and the consent forms were obtained from all the subjects. Heart failure patients had to be on optimal medical treatment for at least 3 months prior to MitraClip<sup>®</sup> treatment according to current guidelines.

### **2.2 Identification of DC precursors by flow cytometry**

All blood samples were collected using Lithium-Heparin blood collection tubes (Sarstedt, Nuembrecht, Germany) and analyzed immediately after sample submission. Dates of analysis were the day of PMVR and at a median of 5.8 months (4-10.2 months) after PMVR. The used fluorescence conjugated mouse anti-human antibodies are as following: CD1c (BDCA-1)-PE, CD303 (BDCA-2)-PE (both from Miltenyi Biotec, Germany), CD14-PerCPCy5.5, CD19-PerCPCy5.5, CD11a-FITC, CD40-FITC, CD86-APC, HLA-DR-APC (all



from BioLegend, San Diego, USA). FACS analysis was performed according to the Blood Dendritic Cell Enumeration Kit protocol from Miltenyi-Biotec. In brief, 300µl of whole blood was added to each sample and erythrocytes were lysed by ammonium chloride (Stemcell, Cologne, Germany). Platelets were removed by two centrifugation steps at 300g each. The samples were incubated with human Fc-Receptor Block (Miltenyi Biotec, Germany) for 10 min on ice, then incubated with fluorescence conjugated mAb or isotype control murine IgG (Miltenyi Biotec, Germany) for 10 min at room temperature (RT). After staining, cells were incubated in 1% paraformaldehyde for fixation and tested by flow cytometry (FACS-Calibur flow cytometer Becton-Dickinson, Heidelberg, Germany) within 24 hours. Data analysis was carried out with FlowJo software (Tree Star, Ashland, USA). As DC precursors represent a low population (about 1% of peripheral blood mononuclear cells (PBMCs)), in order to detect the numbers of circulating mDC and pDC precursors more accurately, a special gate strategy was designed (Figure 3.) according to previous study (54). To avoid the methodical bias caused by the small cell population, we analyzed the blood sample from each patient for three times, and mDC and pDC numbers were described as the mean value of the resulting data. The percentage of CD11c labeled cells (gated in R3a) and CD303 labeled cells (gated in R3b) to PBMCs (gated in R1) were determined as the relative numbers of mDC and pDC precursors, respectively. The absolute numbers of mDC and pDC precursors

were described as cells per microliter (cells/ $\mu$ l), which is based on the relative DCs numbers in relation to leucocytes count, and the leucocytes number was measured with an automated cell counter (Sysmex, Norderstedt, Germany).

**Figure 3.**

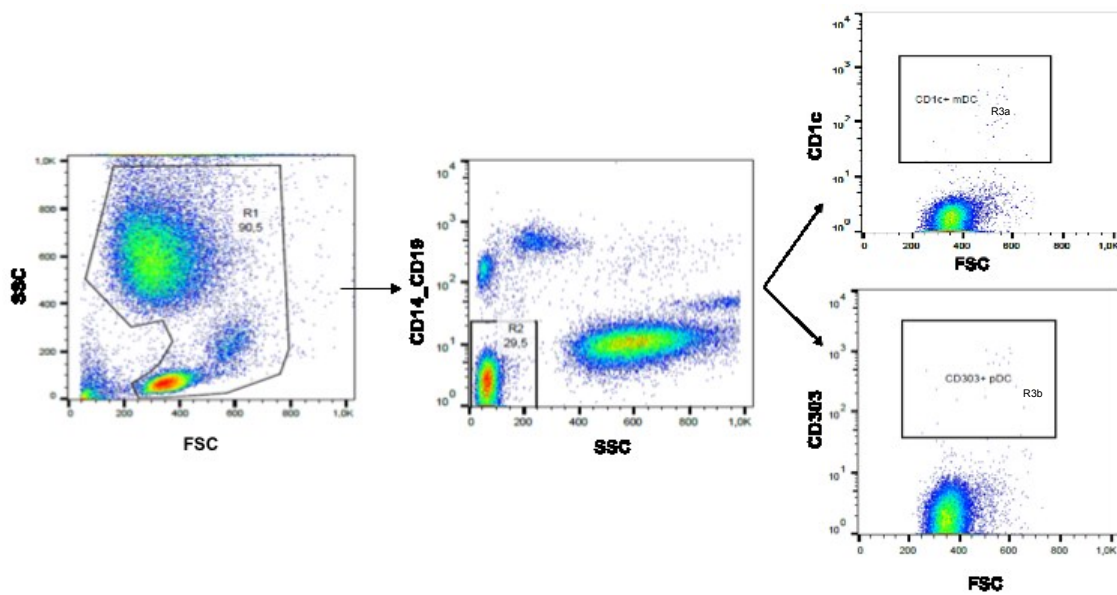


Figure 3. Gate strategy for discrimination of circulating mDC and pDC precursors by flow cytometry. Region R1= acquiring of peripheral blood mononuclear cells (PBMCs) according to the forward scatter (FSC) and side scatter (SSC). Region R2 = exclusion of granulocytes by SSC, monocytes by CD14 staining, B lymphocytes by CD19 staining. Region R3a and R3b = identification of circulating mDC and pDC precursors according to their specific CD1c and CD303 staining, respectively.

### 2.3 Analysis of DCs surface markers with Imaging Flow Cytometer

As the small population of DCs in circulating, it is a challenge to isolate mDCs and pDCs from peripheral blood. We determined the surface expression of

co-stimulatory molecules CD86 and HLA-DR, adhesion molecules CD11a on single mDCs or pDCs with ImageStream<sup>®</sup>X Mark II Imaging Flow Cytometer (Merck Millipore, Germany). Blood samples were collected from 5 patients using citrate blood collection tubes (Sarstedt, Nuembrecht, Germany) and after submission samples were analyzed immediately. The used fluorescence conjugated mouse anti-human antibodies are as following: CD303 (BDCA-2)-PE (Miltenyi Biotec, Germany), CD1c (BDCA-1)-PE/Cy7, CD11a-PerCP, CD86-Brilliant Violet 421, and HLA-DR-Brilliant Violet 605 (all from BioLegend, San Diego, USA). DCs purification was carried out according to the Blood Dendritic Cell Isolation Kit II of Miltenyi-Biotec (Miltenyi Biotec, Germany). In brief, PBMCs were isolated using density gradient centrifugation with Ficoll-Paque (Sigma, Germany). Platelets were removed by two centrifugation steps at 150g each. Total human DCs were purified by two steps separation using MACS system. For that, PBMCs were incubated with cocktail of biotin-conjugated monoclonal anti-human CD1c antibody, and microbeads conjugated monoclonal anti-human CD14 and CD19 antibodies. During the first negative selection, B cells and monocytes were bound by their specific antibodies coupled to beads. Therefore, DCs enriched cell population flow through the column in the magnetic field. In the subsequent step, the flow through population was incubated with microbeads conjugated DCs enrichment cocktail. In this positive selection step, the magnetic beads retain the DCs in the

column, and DCs were eluted from the column outside of the magnetic field. For the detection of surface markers, pre-purified DCs pellets containing  $2 \times 10^5$  cells were resuspended in 1.5ml Eppendorf tubes with FACS buffer (PBS, 5%BSA, 0.1%NaN<sub>3</sub> sodium azide). After washing steps, the cell pellets were incubated with human Fc-Receptor Block (Miltenyi Biotec, Germany) for 10 min on ice, then incubated with a mixture of fluorescence conjugated antibodies for 10min at RT. After staining, cells were incubated with 1% paraformaldehyde for fixation. After washing steps, cells were resuspended in PBS and analyzed with imaging flow cytometer within 24 hours.

#### **2.4 Multiplex Enzyme linked immunosorbent assays (ELISA)**

CRP, IL-6, ST2, TNF- $\alpha$  and IL-10 levels were analyzed in a subgroup of patients by commercially available ELISA kits (eBioscience, R&D) according to the manufacturers' protocol. For analysis of blood samples, Lithium-Heparin or EDTA plasma probes were initially centrifuged for 10min at 1250g within 30 minutes of collection. Samples were directly put in -80°C refrigerator and stored until analysis.

#### **2.5 Clinical parameters**

To have an objective measure of functional capacity, patients underwent the 6-minute walk test (6MWT) before PMVR and at follow up, monitored by the

same investigator according to the recommendation of the American Thoracic Society. (79) Transthoracic echocardiography ( TTE ) and transesophageal echocardiography (TEE) were performed in all patients within 30 days prior to PMVR and at follow up using a Philips CX 50 and iE 33 machine (Philips HealthCare, Hamburg, Germany). The severity of MR at baseline was determined according to the current European Association of Echocardiography guidelines. (80)

## **2.6 Statistical analysis**

Statistical analysis was performed with GraphPad Prism 6 software (GraphPad, San Diego, USA), including descriptive, comparative and relational analysis.

Continuous variables are presented as means  $\pm$  standard error of the mean (SEM), categorical variables are shown with relative or absolute numbers. For comparisons between groups, Mann-Whitney rank test was used for statistical comparison. For correlation analysis, Spearman rank test was performed to test the relativity. The 2-tailed p value < 0.05 was considered statistically significant for both tests.

### **3. Results**

#### **3.1 Baseline Characteristics**

A total of 80 patients undergoing PMVR was finally enrolled. The mean age was 75.2 years (range, 38 to 89). Median follow up was 5.8 months (range: 4 to 10).

Baseline characteristics of all patients are depicted in Table 1.

**Table 1****Baseline patient characteristics (n=80)**

<b>Age</b>	<b>75.2 (38 to 89)</b>
<b>Male gender</b>	<b>47 (58.8%)</b>
<b>Coronary heart disease</b>	<b>57 (71.3%)</b>
<b>Atrial fibrillation</b>	<b>49 (61.3%)</b>
<b>Hypertension</b>	<b>54 (67.5%)</b>
<b>Smoker</b>	<b>14 (17.5%)</b>
<b>Hyperlipoproteinemia</b>	<b>37 (46.3%)</b>
<b>Diabetes</b>	<b>24 (30.0%)</b>
<b>NYHA-class 3-4</b>	<b>76 (95.0%)</b>
<b>Renal insufficiency</b>	<b>33 (41.3%)</b>
<b>LV Function</b>	
<b>≤35%</b>	<b>39 (48.8%)</b>
<b>36-50%</b>	<b>20 (25.0%)</b>
<b>&gt;50%</b>	<b>21 (26.2%)</b>
<b>Regurgitation etiology</b>	
<b>Functional</b>	<b>41 (51.3%)</b>
<b>Degenerative</b>	<b>27 (33.7%)</b>
<b>Mixed</b>	<b>12 (15.0%)</b>
<b>Betablockers</b>	<b>71 (88.8%)</b>
<b>Aldosteronantagonist</b>	<b>42 (52.5%)</b>
<b>ACE-inhibitors/Sartane</b>	<b>71 (88.8%)</b>
<b>Diuretics</b>	<b>74 (92.5%)</b>
<b>Digitalis</b>	<b>6 (7.5%)</b>
<b>Calcium-Antagonists</b>	<b>11 (13.8%)</b>
<b>Anticoagulation</b>	<b>52 (65.0%)</b>

### 3.2 FACS analysis of circulating DCs

Circulating mDC and pDC precursors were discriminated according to their specific surface markers CD1c and CD303, respectively. B cells and monocytes which also express DC markers were prior excluded by their surface markers CD19 and CD14 (Figure 3). Circulating mDC numbers ranged from 0.01% to 0.3% of leukocyte counts and pDC numbers from 0.01% to 0.4% of leukocyte counts in our FACS analysis, respectively. These values are in the range as previous studies described. (53,54) When comparing with the patients who underwent PMVR, a reduced number of mDCs was observed in patients before PMVR as compared to controls. (0.11 vs. 0.19%,  $P < 0.001$ ) (Figure 4A). Such a reduction was not only seen in relative, but also in absolute numbers (6.87/ $\mu$ l vs. 10.38/ $\mu$ l,  $P = 0.003$ ) (Figure 4B), hence excluding a possible dilution effect. Interestingly, the level of circulating mDC precursors increased significantly 6 months after treatment and returned to values similar to the healthy control group (Figure 4B), with a similar tendency in relative numbers (Figure 4A). Similar to the findings for mDCs, relative pDCs were significantly decreased in patients with MR compared to the healthy control subjects (0.07 vs. 0.1%,  $P < 0.05$ ) (Figure 4C). After treatment, the number of circulating pDC precursors significantly increased (0.07% vs. 0.1%,  $P = 0.0002$  for relative number; 4.86/ $\mu$ l vs. 6.56/ $\mu$ l,  $P = 0.0011$  for absolute number) (Figure 4C, D).



**Figure 4.**

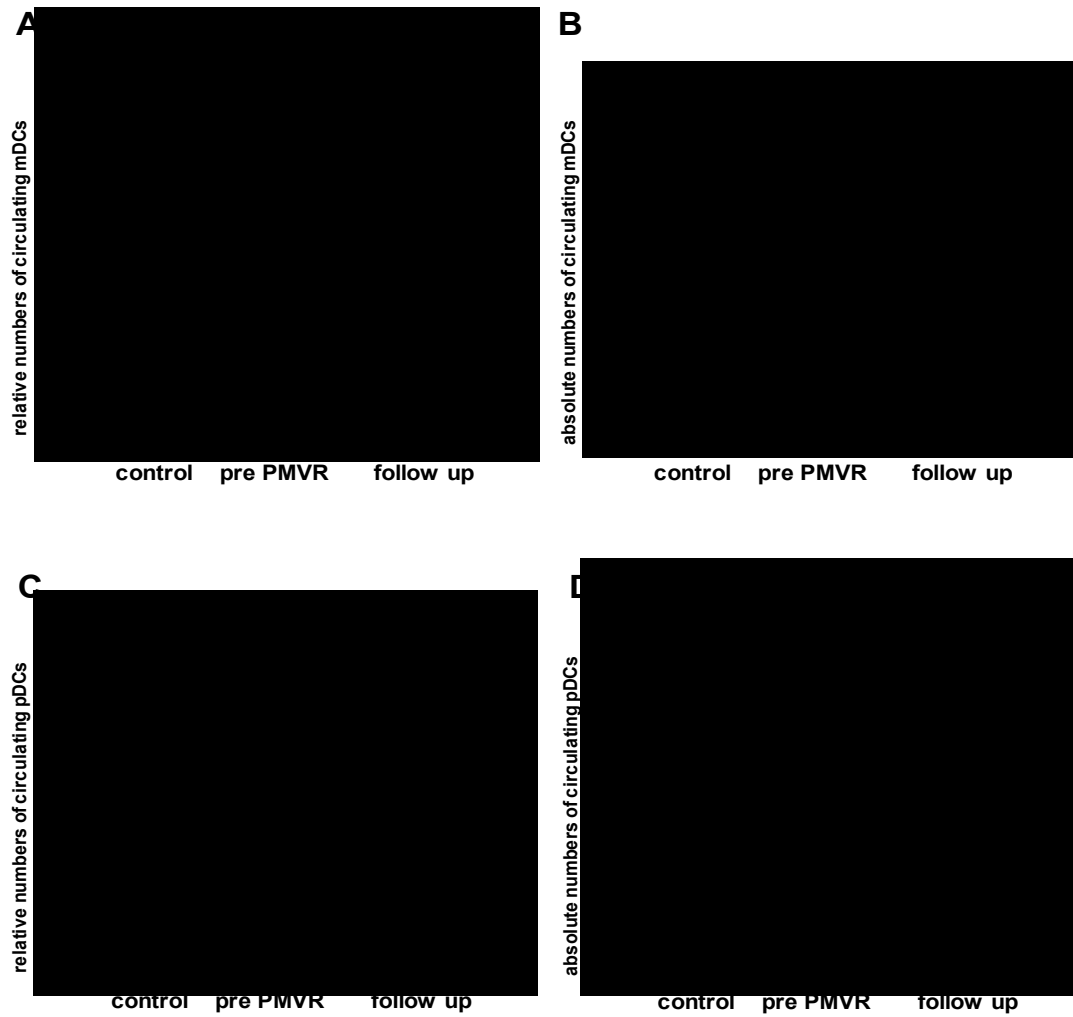


Figure 4. Relative and absolute numbers of circulating mDC and pDC precursors in control group (n=11), patients with MR before PMVR (pre PMVR, n=80) and at 6 months follow up (follow up, n=80). Circulating mDC precursors are shown as a percentage of leucocytes (**A**) and as cells per microliter (cells/ $\mu$ l) (**B**). Circulating pDC precursors are shown in (**C**, **D**). Graphs depict median (line in the box), 25th (upper boundary of box) and 75th (lower boundary of box) percentile.

\*P<0.05.

### **3.3 Analysis for phenotype of DC precursors**

To phenotype DCs, we detected the expression of adhesion molecule CD11a, co-stimulatory molecules HLA-DR (MHC class II) and CD86 with imaging flow cytometer (Figure 5). A high amount of CD11a and HLA-DR was found constitutively expressed on both mDC and pDC precursors, which is known in the prior studies (48,81). By FACS, we detected the adhesion molecule CD11a, co-stimulatory molecules CD40, CD86 and HLA-DR on DC precursors. We detected no significant change in co-stimulatory molecules for both mDC and pDC precursors before and after PMVR, although there is a significant increased expression of CD40 and decreased expression of HLA-DR on mDC precursors in patients compare to control subjects. (Figure 6) However, we observed a significantly increased expression of adhesion molecule CD11a on mDC precursors before PMVR compared to control subjects, (Figure 7) whereas no significant difference for pDC surface expression of CD11a was detected. Interestingly, at follow up of 6 months after PMVR, both mDC and pDC surface expression of CD11a were significantly decreased (MFI: 135 vs. 105,  $P < 0.0001$  for mDC; 97 vs. 72,  $P = 0.002$  for pDC). Thus, the levels and the phenotype of circulating DC precursors change after PMVR.

**Figure 5.**

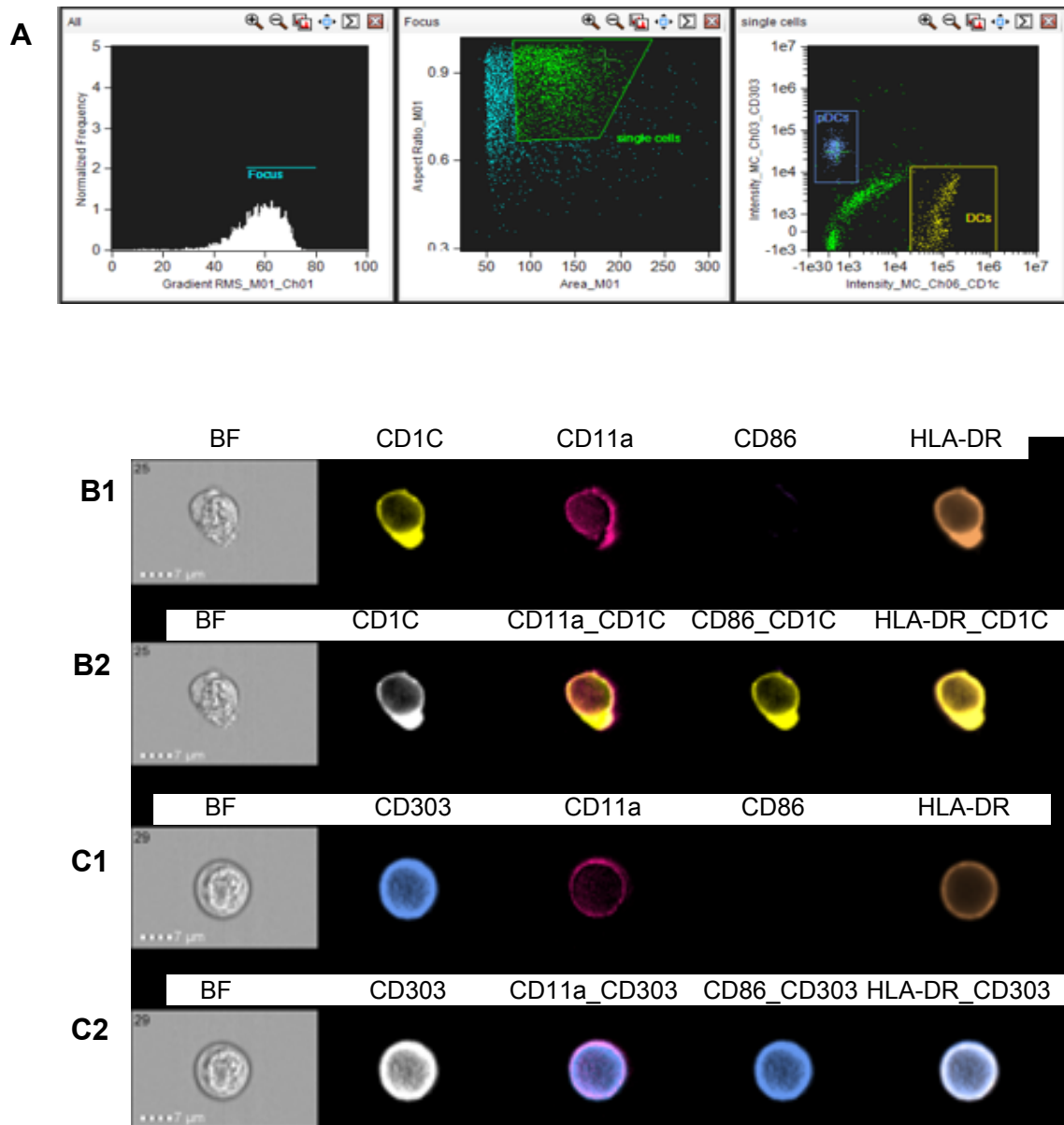


Figure 5. (A) Screen capture of gate strategy for analysis of DCs. Representative scatter plots of cells labeled with CD1c (gated in yellow) and CD303 (gated in blue). In the image gallery of single cells, the yellow color represents CD1c labelled cells, blue color represents CD303 labelled cells, pink represents CD11a, purple represents CD86 and orange represents HLA-DR. (B1) and (C1) represent the single staining for mDCs and pDCs, respectively. (B2) and (C2) represent the overlay of surface markers with mDCs and pDCs, respectively. Scale bar = 7 $\mu$ m.

Figure 6.

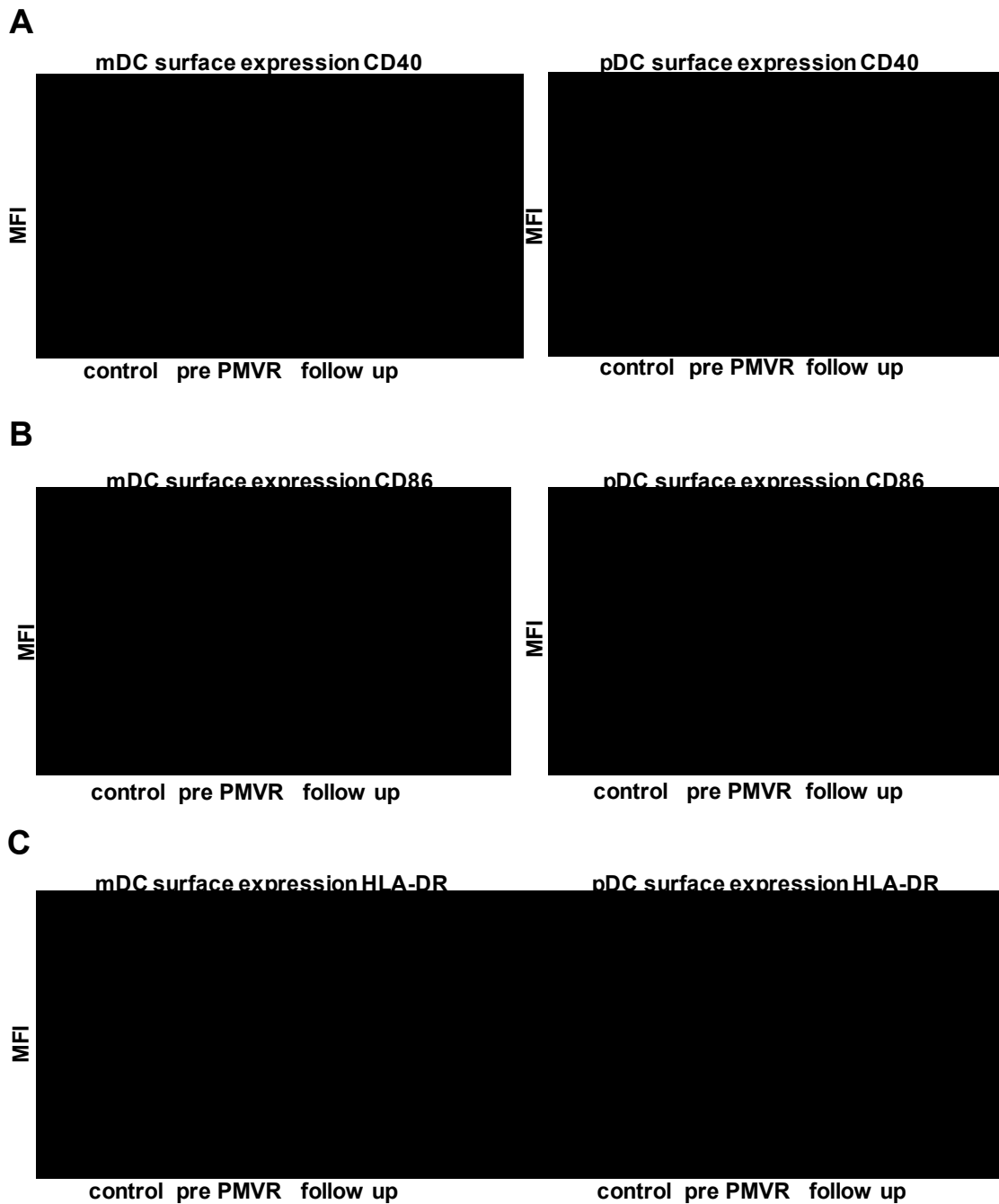


Figure 6. Circulating mDC and pDC precursors surface expression of co-stimulatory molecules. Levels of CD40 (A), CD86 (B) and HLA-DR (C) shown as mean fluorescence intensity (MFI) were analyzed by flow cytometry. control, n=11; pre PMVR, n=80; follow up, n=80. Data is shown as mean  $\pm$  SEM.

**Figure 7.**

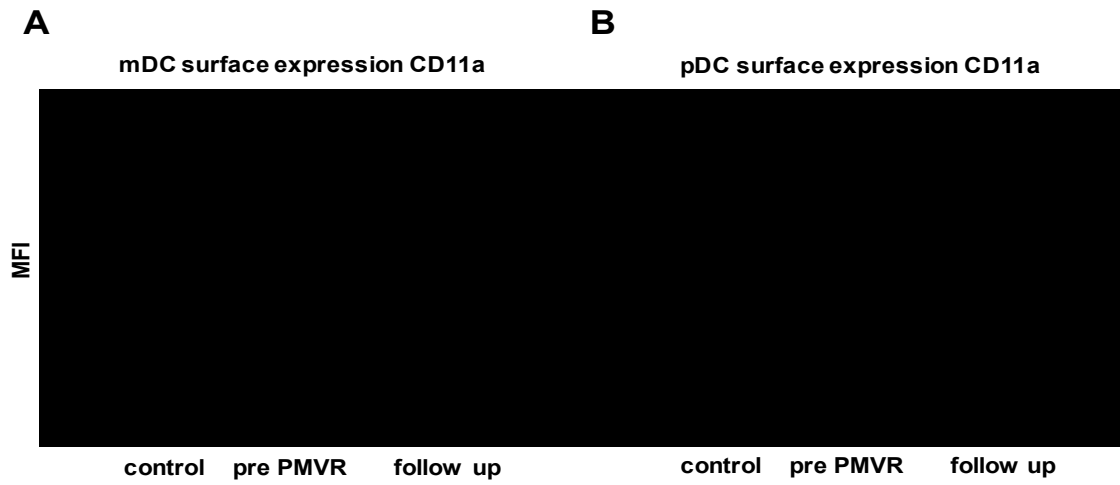


Figure 7. Expression of homing and adhesion molecule CD11a on mDC (A) and pDC (B) precursors. Expression of CD11a is presented as mean fluorescence intensity (MFI). control, n=11; pre PMVR, n=80; follow up, n=80. Data is shown as mean  $\pm$  SEM. \*P<0.05

### 3.4 Correlations of circulating mDCs with CD40 and HLA-DR

As the significant changing of CD40 and HLA-DR on mDCs between control group and patients, we also examined the correlations between mDCs and CD40, HLA-DR expression in patients. We found that the up regulation of CD40 in patients was inverse correlated with circulating mDCs , and the down regulation of HLA-DR in patients was positive correlated with circulating mDCs (Figure 8).

**Figure 8.**

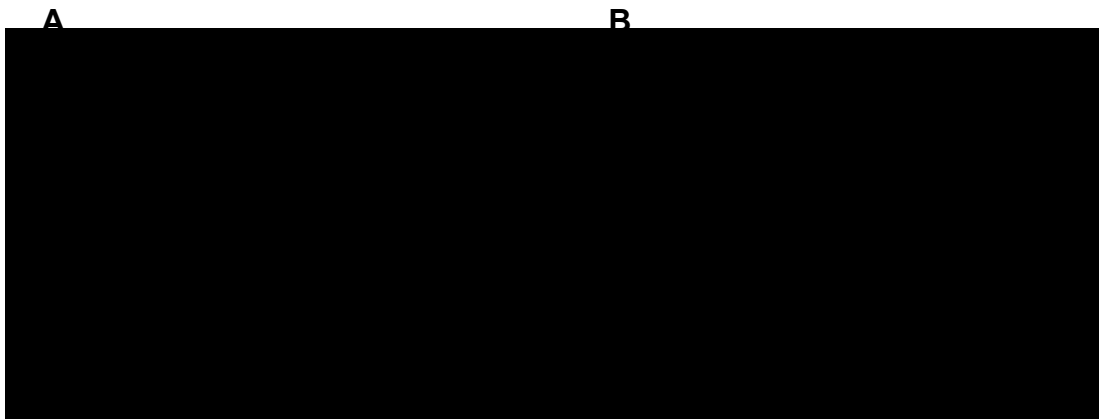


Figure 8. Association of mDC precursors with co-stimulatory molecules. Significant inverse correlation between the relative circulating mDC precursors numbers and their surface expression of CD40 (**A**), n=80. Significant positive correlation between the relative circulating mDC precursors numbers and their surface expression of HLA-DR (**B**), n=80.

### **3.5 Improvement of clinical parameters**

In order to identify a possible improvement of clinical parameters for HF, we measured the typical parameters of LV remodeling and HF, such as left ventricular end diastolic diameter (LVEDD), distance of 6-minute walk test (6MWT), as well as heart failure biomarkers, such as pro-inflammatory markers CRP, IL-6, ST2, TNF- $\alpha$  and anti-inflammatory marker IL-10, before PMVR and at 6 month follow up. There is significant changing of LVEDD, 6MWT, IL-6 and CRP, see Figure 9, which parallel with the changing of circulating DCs.

Figure 9.

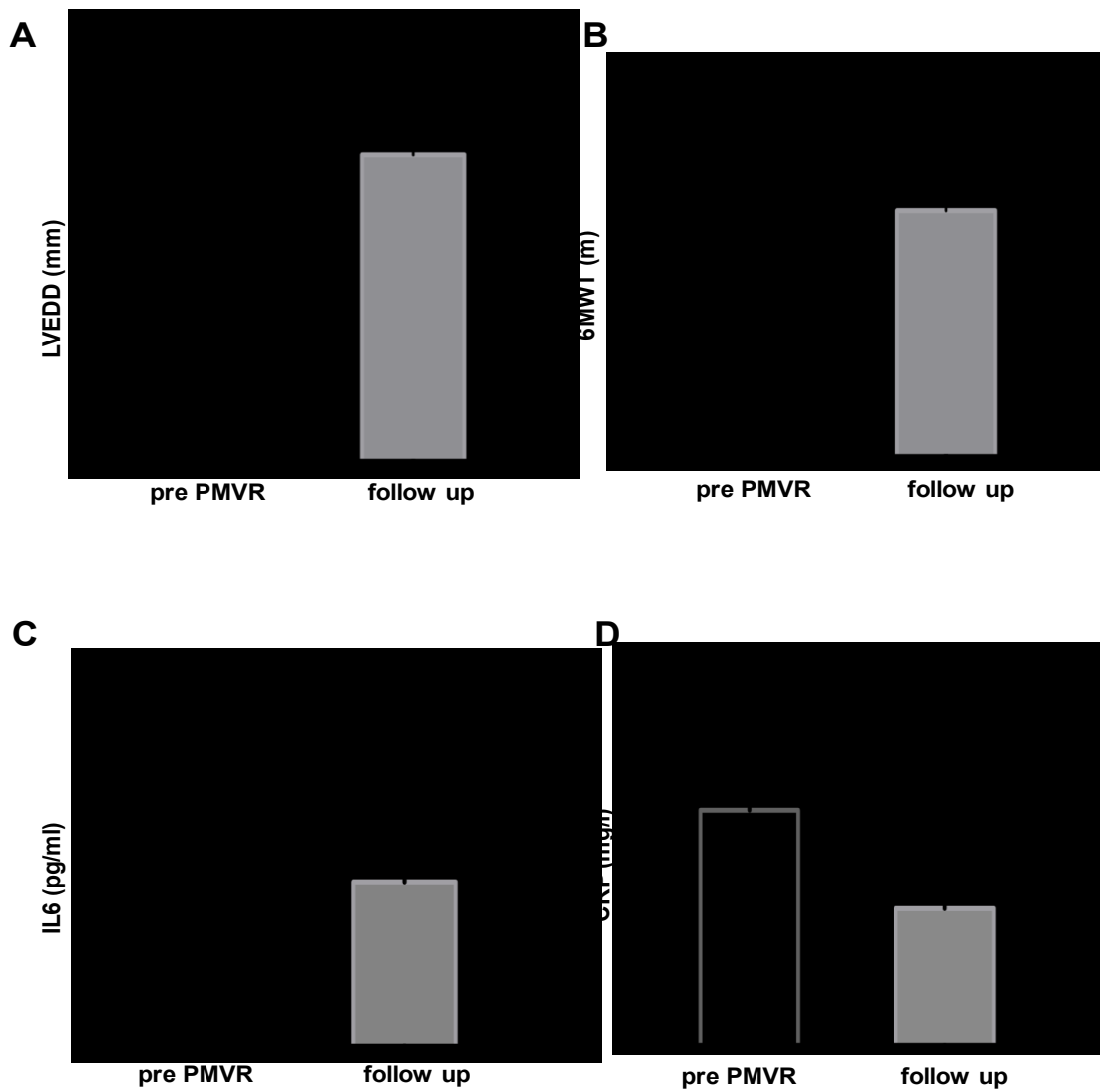


Figure 9. Left ventricular end diastolic diameter (LVEDD, **A**) as a parameter for volume overload was determined, n=55. Distance of 6-minute walk test (6MWT, **B**), n=46. Plasma levels of interleukin-6 (IL6, **C**), n=70, and C-reactive protein (CRP, **D**), n=75 were analyzed. Data is shown as mean  $\pm$  SEM. \*P<0.05



### 3.6 Correlation analysis of circulating mDCs and heart failure parameters

To confirm the relation of DCs to heart failure parameters, we further conducted correlation statistics between the changing of DCs and the changing of above clinical heart failure parameters. The recovery of mDCs correlated well with 6MWT, as well as inversely correlated with IL-6 and CRP. (Figure 10)

In contrast to the above findings for mDCs, pDC analyses did not yield any correlates among groups. (Figure 11)

**Figure10.**

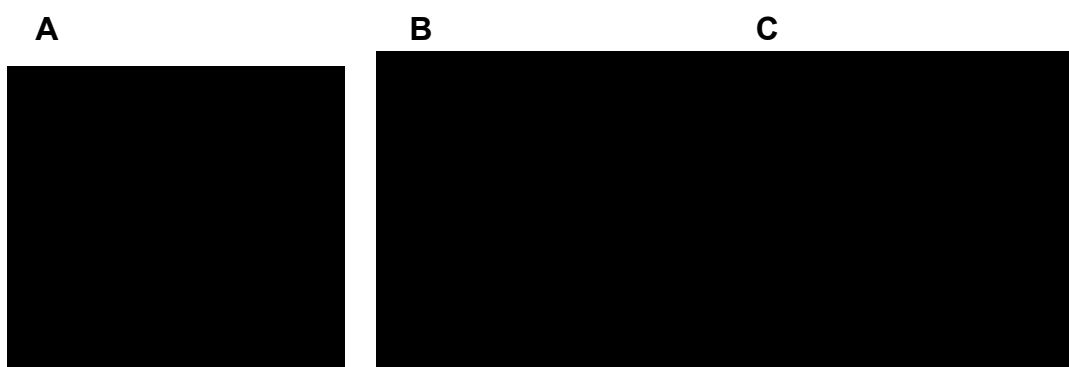


Figure 10. Association of mDC precursors with markers of heart failure parameters. Significant positive correlation between the increased relative circulating mDC precursors numbers and the improvement in 6-minute walk test (6MWT) distance (**A**). Significant inverse correlation between the change in relative circulating mDC precursors numbers and change of plasma interleukin-6 (IL6, **B**) and C-reactive protein (CRP, **C**) levels.

Figure 11.

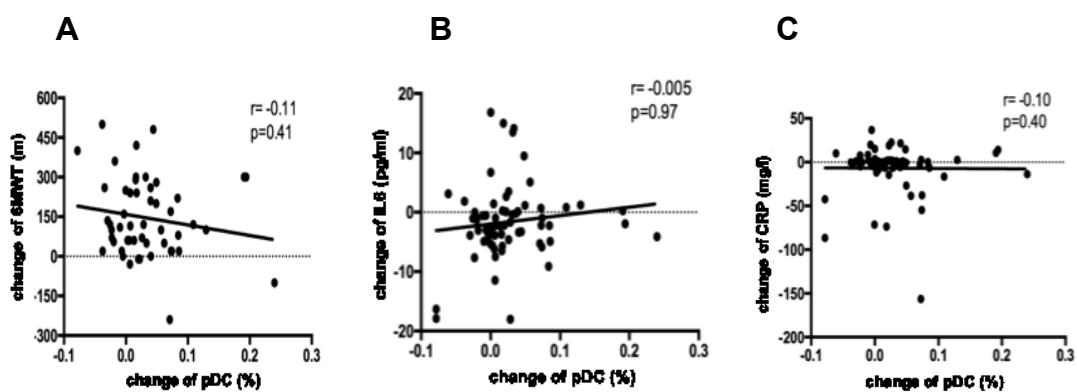


Figure 11. No correlation was observed between the change in the relative number of circulating pDC precursors and the improved functional capacity of HF patients as assessed with the 6-minute walk test (6MWT) distance (**A**), with plasma levels of interleukin-6 (IL6, **B**) or with C-reactive protein (CRP, **C**).

#### **4. Discussion**

In our study we were able to show that i) the numbers of circulating mDC and pDC precursors are reduced in MR related HF patients, and PMVR treatment increased their levels at a follow up after 6 months, furthermore, ii) the reduction of mDCs in patients correlates with the expression of co-stimulatory molecules CD40 and HLA-DR. iii) After PMVR, the phenotype of circulating DCs changed, which showed for example decreased expression of the homing molecule CD11a and that iiiii) change of mDC precursors correlated with improvement of clinical parameters of HF and inversely correlated with markers of an inflammatory response.

Two major different types of DCs and their migratory route have been described in human. (48,82) Both types of DCs appear to be in transit in the peripheral circulation as precursor cells before they migrate into peripheral tissues. (83) Significant alteration of circulating DC precursors has been reported in several immune-mediate diseases, (54,84,85) and it is assumed that their reduced presence is mediated by enhanced recruitment into inflamed tissue (54). In the cardiovascular system in mice, it was recently demonstrated that DCs are present within the aortic wall and heart valves, and the localization of DCs is mainly in areas with turbulent flow. (49). In MR patients, volume overload causes disturbed flow at various areas of the heart tissue including the heart valves,

predominantly during the systolic period. (86)

In the present study, we explored whether any change of circulating DC precursors might be associated with an immune activation in advanced heart failure. We found that the number of peripheral circulating mDC precursors is significantly decreased in patients with MR related heart failure compared with healthy control subjects. Additionally, the treatment of PMVR and, thus, reduction of volume overload resulted in increased number of circulating mDC and pDC precursors at 6 month follow up, similar to levels of the healthy control group. More interestingly, we observed the decreased number of mDCs in patients before treatment is associated with the change of phenotypes of CD40 and HLA-DR.

Elevated inflammatory biomarkers, which includes TNF- $\alpha$ , ST2, IL-6, CRP, is a hallmark characteristic for HF. (21) Measurement of biomarkers in HF patients and animal studies have convincingly demonstrated the elevation of inflammatory cytokines during HF progression. (21) Previous clinical intervention studies have tested the principle to interfere with inflammatory pathways. (65,69,71) The achieved properties in patients with HF, however, have produced fairly disappointing results. (21,62,65,71) This outcome may reflect the complexity of HF pathophysiology with different underlying disorders from inflammatory cardiomyopathy to ischemic heart disease. We assessed instead

patients with congestive HF caused by MR featuring volume overload as a predominant mechanism of disease. Future studies will have to scrutinize the number of circulating DC precursors, their phenotype and their correlation with clinical parameters, in other settings of heart failure as well. In our patient collective, we furthermore observed a significant reduction of classical pro-inflammatory cytokines IL-6 and CRP in MR patients 6 months after PMVR treatment. The increased levels of circulating mDC precursors correlated with the change of plasma IL-6 and CRP levels, thus reflecting a potential crosstalk between the presence and phenotype of these immune cells to inflammatory processes in HF patients, rather than it being an isolated phenomenon. Further studies, however, will have to test this hypothesis more profoundly. Interestingly, mDC precursors showed a significant correlation with the functional capacity in heart failure patients. In contrast, we did not find any correlation with circulating pDC precursors suggesting cell specificity for this observation. In order to further challenge and characterize the involvement of circulating DC precursors and their phenotype as a decisive factor or a potential biomarker in patients with HF caused by volume overload, future basic and clinical studies are warranted.

In conclusion, we demonstrate to our knowledge for the first time an effect of interventional treatment for MR featuring cardiac volume stress on levels of circulating DC precursors and their phenotype, which was associated with increase in functional capacity and reduction of inflammatory markers. Thus, our

results point to a previously unattended intersection point between volume overload and a cellular immune response.

## 5. Summary

**Aim:** Immune mechanisms and inflammation contribute to the pathophysiology of heart failure (HF) in different ways. As the center of immune response, dendritic cells (DCs) play an important role in LV remodeling after myocardial ischemia and myocarditis, however, the role of dendritic cells in non-ischemic HF with volume overload has not been addressed, so far. Here, we investigated the number and phenotype of circulating DC precursors in a patient collective undergoing percutaneous mitral valve repair (PMVR) of mitral regurgitation to uncover the potential crosstalk of volume overload HF with immune regulation.

**Methods:** Using flow cytometry, we determined the numbers of circulating myeloid DCs (mDCs), plasmacytoid DCs (pDCs) and their surface expression of co-stimulatory molecules CD40, CD86, HLA-DR, as well as adhesion molecule CD11a in healthy control subjects (n=11) and MR patients at the time of PMVR (n=125) and at a median follow-up (n=80) of 5.8 (4 to 10) months. Levels of plasma inflammatory cytokines and change in left ventricular end-diastolic diameter (LVEDD) were assessed, and a 6-minute walk test was carried out prior to PMVR and during follow-up. **Results:** Compared to controls (mDC 10.38/ $\mu$ l and pDC 5.44/ $\mu$ l, respectively), patients with MR had significantly decreased numbers of circulating mDC precursors (6.87/ $\mu$ l,  $P < 0.01$ ), whereas there was no significant difference regarding pDC precursors (4.86/ $\mu$ l). While a significant up-regulation of mDC surface expression of CD11a (mean

fluorescence intensity (MFI) 160,  $P < 0.05$ ) was detected compared to healthy controls (MFI: 130), no significant differences for CD40, CD86 and HLA-DR were found. During follow-up, PMVR treatment restored reduction of circulating mDC precursors ( $8.93/\mu\text{l}$ ,  $P < 0.001$ ). Furthermore, we observed an increase in circulating pDC precursors ( $6.56/\mu\text{l}$ ,  $P < 0.01$ ). Simultaneously, surface expression of CD11a on circulating mDC and pDC significantly decreased after PMVR. The increased numbers of circulating DC precursors after PMVR was paralleled by a reduction of CRP, IL6 levels, decreased LVEDD and an improvement of 6-minute walk test distance. Interestingly, the change in mDC levels showed a positive correlation with 6-minute walk test distance and an inverse correlation with inflammatory markers CRP and IL-6. **Conclusions:** Our findings suggest that the change of circulating DC precursors may be involved in the pathophysiology of MR relevant HF.



## 6. Zusammenfassung

**Ziel:** Immune Mechanismen und Entzündungen werden vorgeschlagen, um die Pathophysiologie der Herzinsuffizienz (HF) auf unterschiedliche Weise zu beeinflussen. Als Zentrum der Immunantwort spielen auch dendritische Zellen (DCs) eine wichtige Rolle bei der LV-Remodellierung nach Myokardischämie und Myokarditis, jedoch ist die Rolle der dendritischen Zellen bei nicht-ischämischen HF mit Volumenüberlastung bisher nicht angesprochen worden. Hier untersuchten wir die Anzahl und den Phänotyp zirkulierender DC-Vorstufen in einem Patientenkollektiv, das einer perkutanen Mitralklappenreparatur (PMVR) der Mitralinsuffizienz unterzogen wurde, um das mögliche Übersprechen der Volumenüberlastung HF mit Immunregulation aufzudecken. **Methoden:** Mit Hilfe der Durchflusszytometrie ermittelten wir die Anzahl der zirkulierenden myeloiden DCs (mDC), der Plasmacytoid-DCs (pDC) und ihrer Oberflächenexpression der co-stimulatorischen Moleküle CD40, CD86, HLA-DR sowie des Adhäsionsmoleküls CD11a bei gesunden Kontrollpersonen (N = 11) und MR-Patienten zum Zeitpunkt der PMVR (n = 125) und bei einem medianen Follow-up (N =80) von 5,8 (Bereich: 4 bis 10) Monate. Ebenen der Plasma-entzündlichen Zytokine, Veränderung des linksventrikulären enddiastolischen Durchmessers (LVEDD) wurden beurteilt und ein 6-Minuten-Gehtest wurde vor dem PMVR und während des Follow-up durchgeführt. **Ergebnisse:** Im Vergleich zu den Kontrollproben (mDC 10,38/ $\mu$ l

bzw. pDC 5,44/ $\mu$ l) zeigten die Patienten mit MR signifikant verminderte Anzahl an zirkulierenden mDC-Vorläufern (6,87/ $\mu$ l, P <0,01) War kein signifikanter Unterschied bezüglich der pDC-Vorläufer (4,86/ $\mu$ l). Während eine signifikante Erhöhung der mDC-Oberflächenexpression von CD11a (mittlere Fluoreszenzintensität (MFI) 160, P <0,05) im Vergleich zu gesunden Kontrollen (MFI: 130) festgestellt wurde, wurden keine signifikanten Unterschiede für CD40, CD86 und HLA-DR gefunden. Während der Nachuntersuchung führte die PMVR-Behandlung zu einer Reduktion von zirkulierenden mDC-Vorläufern (8,93/ $\mu$ l, P<0,001). Darüber hinaus beobachteten wir eine Zunahme der zirkulierenden pDC-Vorstufen (6,56/ $\mu$ l, P <0,01). Gleichzeitig verringerte sich die Oberflächenexpression von CD11a beim Zirkulieren von mDC und pDC nach PMVR signifikant. Die erhöhte Anzahl von zirkulierenden DC-Vorläufern nach PMVR wurde durch eine Reduktion von CRP, IL6 Niveaus, vermindertem LVEDD und einer Verbesserung der 6-minütigen Spaziergangsteststrecke verglichen. Interessanterweise zeigte die Veränderung der mDC-Spiegel eine positive Korrelation mit einer 6-minütigen Wanderteststrecke und einer inversen Korrelation mit den entzündlichen Markern CRP und IL-6. **Schlussfolgerungen:** Unsere Ergebnisse deuten darauf hin, dass die Veränderung der zirkulierenden DC Vorläufer in der Pathophysiologie der MR relevant HF beteiligt sein kann.

## 7. References

1. Ponikowski P, Anker SD, AlHabib KF, Cowie MR, Force TL, Hu S, et al. Heart failure: preventing disease and death worldwide. *ESC Heart Fail.* 2014 Sep 1;1(1):4–25.
2. Sun Y. Myocardial repair/remodelling following infarction: roles of local factors. *Cardiovasc Res.* 2009 Feb 15;81(3):482–90.
3. Levine RA, Hagège AA, Judge DP, Padala M, Dal-Bianco JP, Aikawa E, et al. Mitral valve disease—morphology and mechanisms. *Nat Rev Cardiol.* 2015 Dec;12(12):689–710.
4. Manning WJ. Asymptomatic aortic stenosis in the elderly: a clinical review. *JAMA.* 2013 Oct 9;310(14):1490–7.
5. Eriksson U, Ricci R, Hunziker L, Kurrer MO, Oudit GY, Watts TH, et al. Dendritic cell-induced autoimmune heart failure requires cooperation between adaptive and innate immunity. *Nat Med.* 2003 Dec;9(12):1484–90.
6. Cooper LT. Myocarditis. *N Engl J Med.* 2009 Apr 9;360(15):1526–38.
7. Gramlich M, Pane LS, Zhou Q, Chen Z, Murgia M, Schötterl S, et al. Antisense-mediated exon skipping: a therapeutic strategy for titin-based dilated cardiomyopathy. *EMBO Mol Med.* 2015 May;7(5):562–76.
8. Gheorghiade M, Abraham WT, Albert NM, Greenberg BH, O'Connor CM, She L, et al. Systolic Blood Pressure at Admission, Clinical Characteristics, and Outcomes in Patients Hospitalized With Acute Heart Failure. *JAMA.* 2006 Nov 8;296(18):2217.
9. Mueller C, Laule-Kilian K, Christ A, Brunner–La Rocca HP, Perruchoud AP. Inflammation and long-term mortality in acute congestive heart failure. *Am Heart J.* 2006 Apr;151(4):845–50.
10. Ponikowski P, Voors AA, Anker SD, Bueno H, Cleland JGF, Coats AJS,

et al. 2016 ESC Guidelines for the diagnosis and treatment of acute and chronic heart failure: The Task Force for the diagnosis and treatment of acute and chronic heart failure of the European Society of Cardiology (ESC) Developed with the special contribution of the Heart Failure Association (HFA) of the ESC. *Eur Heart J*. 2016 Jul 14;37(27):2129–200.

11. Marmot MG. Understanding social inequalities in health. *Perspect Biol Med*. 2003;46(3 Suppl):S9–23.

12. Mackenbach JP, Cavelaars AE, Kunst AE, Groenhouf F. Socioeconomic inequalities in cardiovascular disease mortality; an international study. *Eur Heart J*. 2000 Jul;21(14):1141–51.

13. Philbin EF, Dec GW, Jenkins PL, DiSalvo TG. Socioeconomic status as an independent risk factor for hospital readmission for heart failure. *Am J Cardiol*. 2001 Jun 15;87(12):1367–71.

14. Philbin EF, DiSalvo TG. Prediction of hospital readmission for heart failure: development of a simple risk score based on administrative data. *J Am Coll Cardiol*. 1999 May;33(6):1560–6.

15. Anand IS, Latini R, Florea VG, Kuskowski MA, Rector T, Masson S, et al. C-reactive protein in heart failure: prognostic value and the effect of valsartan. *Circulation*. 2005 Sep 6;112(10):1428–34.

16. Nording HM, Seizer P, Langer HF. Platelets in inflammation and atherogenesis. *Front Immunol*. 2015;6:98.

17. Galkina E, Ley K. Immune and inflammatory mechanisms of atherosclerosis (\*). *Annu Rev Immunol*. 2009;27:165–97.

18. Swirski FK, Nahrendorf M. Leukocyte Behavior in Atherosclerosis, Myocardial Infarction, and Heart Failure. *Science*. 2013 Jan 11;339(6116):161–6.

19. Yan X, Anzai A, Katsumata Y, Matsushashi T, Ito K, Endo J, et al. Temporal dynamics of cardiac immune cell accumulation following acute

myocardial infarction. *J Mol Cell Cardiol.* 2013 Sep;62:24–35.

20. Liu L, Wang Y, Cao Z, Wang M, Liu X, Gao T, et al. Up-regulated TLR4 in cardiomyocytes exacerbates heart failure after long-term myocardial infarction. *J Cell Mol Med.* 2015 Dec;19(12):2728–40.

21. Mann DL. Innate immunity and the failing heart: the cytokine hypothesis revisited. *Circ Res.* 2015 Mar 27;116(7):1254–68.

22. Mann DL, Topkara VK, Evans S, Barger PM. Innate immunity in the adult mammalian heart: for whom the cell tolls. *Trans Am Clin Climatol Assoc.* 2010;121:34–50; discussion 50–1.

23. Falkenham A, de Antueno R, Rosin N, Betsch D, Lee TDG, Duncan R, et al. Nonclassical resident macrophages are important determinants in the development of myocardial fibrosis. *Am J Pathol.* 2015 Apr;185(4):927–42.

24. Kain D, Amit U, Yagil C, Landa N, Naftali-Shani N, Molotski N, et al. Macrophages dictate the progression and manifestation of hypertensive heart disease. *Int J Cardiol.* 2016 Jan 15;203:381–95.

25. Heymans S, Corsten MF, Verhesen W, Carai P, van Leeuwen REW, Custers K, et al. Macrophage microRNA-155 promotes cardiac hypertrophy and failure. *Circulation.* 2013 Sep 24;128(13):1420–32.

26. Coles B, Fielding CA, Rose-John S, Scheller J, Jones SA, O'Donnell VB. Classic Interleukin-6 Receptor Signaling and Interleukin-6 trans-Signaling Differentially Control Angiotensin II-Dependent Hypertension, Cardiac Signal Transducer and Activator of Transcription-3 Activation, and Vascular Hypertrophy in Vivo. *Am J Pathol.* 2007 Jul;171(1):315–25.

27. Lai NC, Gao MH, Tang E, Tang R, Guo T, Dalton ND, et al. Pressure overload-induced cardiac remodeling and dysfunction in the absence of interleukin 6 in mice. *Lab Investig J Tech Methods Pathol.* 2012 Nov;92(11):1518–26.

28. Hirota H, Chen J, Betz UA., Rajewsky K, Gu Y, Ross J, et al. Loss of a gp130 Cardiac Muscle Cell Survival Pathway Is a Critical Event in the Onset of Heart Failure during Biomechanical Stress. *Cell*. 1999 Apr;97(2):189–98.
29. Kindermann I, Barth C, Mahfoud F, Ukena C, Lenski M, Yilmaz A, et al. Update on myocarditis. *J Am Coll Cardiol*. 2012 Feb 28;59(9):779–92.
30. Liu PP, Mason JW. Advances in the Understanding of Myocarditis. *Circulation*. 2001 Aug 28;104(9):1076–82.
31. Jahns R, Boivin V, Schwarzbach V, Ertl G, Lohse MJ. Pathological autoantibodies in cardiomyopathy. *Autoimmunity*. 2008 Sep;41(6):454–61.
32. Jahns R, Boivin V, Krapf T, Wallukat G, Boege F, Lohse MJ. Modulation of beta1-adrenoceptor activity by domain-specific antibodies and heart failure-associated autoantibodies. *J Am Coll Cardiol*. 2000 Oct;36(4):1280–7.
33. Jahns R, Boivin V, Hein L, Triebel S, Angermann CE, Ertl G, et al. Direct evidence for a beta 1-adrenergic receptor-directed autoimmune attack as a cause of idiopathic dilated cardiomyopathy. *J Clin Invest*. 2004 May;113(10):1419–29.
34. Göser S, Andrassy M, Buss SJ, Leuschner F, Volz CH, Ottl R, et al. Cardiac troponin I but not cardiac troponin T induces severe autoimmune inflammation in the myocardium. *Circulation*. 2006 Oct 17;114(16):1693–702.
35. Sandek A, Bjarnason I, Volk H-D, Crane R, Meddings JB, Niebauer J, et al. Studies on bacterial endotoxin and intestinal absorption function in patients with chronic heart failure. *Int J Cardiol*. 2012 May 17;157(1):80–5.
36. Verbrugge FH, Dupont M, Steels P, Grieten L, Malbrain M, Tang WHW, et al. Abdominal contributions to cardiorenal dysfunction in congestive heart failure. *J Am Coll Cardiol*. 2013 Aug 6;62(6):485–95.
37. Conraads VM, Jorens PG, De Clerck LS, Van Saene HK, Ieven MM, Bosmans JM, et al. Selective intestinal decontamination in advanced chronic

heart failure: a pilot trial. *Eur J Heart Fail.* 2004 Jun;6(4):483–91.

38. Sager HB, Heidt T, Hulsmans M, Dutta P, Courties G, Sebas M, et al. Targeting Interleukin-1 $\beta$  Reduces Leukocyte Production After Acute Myocardial Infarction. *CLINICAL PERSPECTIVE. Circulation.* 2015 Nov 17;132(20):1880–90.

39. Monden Y, Kubota T, Inoue T, Tsutsumi T, Kawano S, Ide T, et al. Tumor necrosis factor-alpha is toxic via receptor 1 and protective via receptor 2 in a murine model of myocardial infarction. *Am J Physiol Heart Circ Physiol.* 2007 Jul;293(1):H743–53.

40. Hamid T, Gu Y, Ortines RV, Bhattacharya C, Wang G, Xuan Y-T, et al. Divergent tumor necrosis factor receptor-related remodeling responses in heart failure: role of nuclear factor-kappaB and inflammatory activation. *Circulation.* 2009 Mar 17;119(10):1386–97.

41. Weinberg EO, Shimpo M, Hurwitz S, Tominaga S, Rouleau J-L, Lee RT. Identification of serum soluble ST2 receptor as a novel heart failure biomarker. *Circulation.* 2003 Feb 11;107(5):721–6.

42. Sharma UC, Pokharel S, van Brakel TJ, van Berlo JH, Cleutjens JPM, Schroen B, et al. Galectin-3 marks activated macrophages in failure-prone hypertrophied hearts and contributes to cardiac dysfunction. *Circulation.* 2004 Nov 9;110(19):3121–8.

43. Krishnamurthy P, Rajasingh J, Lambers E, Qin G, Losordo DW, Kishore R. IL-10 Inhibits Inflammation and Attenuates Left Ventricular Remodeling After Myocardial Infarction via Activation of STAT3 and Suppression of HuR. *Circ Res.* 2009 Jan 30;104(2):e9–18.

44. Verma SK, Krishnamurthy P, Barefield D, Singh N, Gupta R, Lambers E, et al. Interleukin-10 Treatment Attenuates Pressure Overload-Induced Hypertrophic Remodeling and Improves Heart Function via Signal Transducers and Activators of Transcription 3-Dependent Inhibition of Nuclear Factor- $\kappa$ B. *Circulation.* 2012 Jul 24;126(4):418–29.

45. Rauchhaus M, Doehner W, Francis DP, Davos C, Kemp M, Liebenthal C, et al. Plasma cytokine parameters and mortality in patients with chronic heart failure. *Circulation*. 2000 Dec 19;102(25):3060–7.
46. Dominguez F, Kühl U, Pieske B, Garcia-Pavia P, Tschöpe C. Update on Myocarditis and Inflammatory Cardiomyopathy: Reemergence of Endomyocardial Biopsy. *Rev Espanola Cardiol Engl Ed*. 2016 Feb;69(2):178–87.
47. Liu YJ. Dendritic cell subsets and lineages, and their functions in innate and adaptive immunity. *Cell*. 2001 Aug 10;106(3):259–62.
48. Dzionek A, Fuchs A, Schmidt P, Cremer S, Zysk M, Miltenyi S, et al. BDCA-2, BDCA-3, and BDCA-4: Three Markers for Distinct Subsets of Dendritic Cells in Human Peripheral Blood. *J Immunol*. 2000 Dec 1;165(11):6037–46.
49. Choi J-H, Do Y, Cheong C, Koh H, Boscardin SB, Oh Y-S, et al. Identification of antigen-presenting dendritic cells in mouse aorta and cardiac valves. *J Exp Med*. 2009 Mar 16;206(3):497–505.
50. Anzai A, Anzai T, Nagai S, Maekawa Y, Naito K, Kaneko H, et al. Regulatory role of dendritic cells in postinfarction healing and left ventricular remodeling. *Circulation*. 2012 Mar 13;125(10):1234–45.
51. Blyszczuk P, Kania G, Dieterle T, Marty RR, Valaperti A, Berthonneche C, et al. Myeloid Differentiation Factor-88/Interleukin-1 Signaling Controls Cardiac Fibrosis and Heart Failure Progression in Inflammatory Dilated Cardiomyopathy. *Circ Res*. 2009 Oct 23;105(9):912–U204.
52. Cai G, Wang H, Qin Q, Zhang J, Zhu Z, Liu M, et al. Amelioration of myocarditis by HVEM-overexpressing dendritic cells through induction of IL-10-producing cells. *Cardiovasc Res*. 2009 Dec 1;84(3):425–33.
53. Pistulli R, Hammer N, Rohm I, Kretzschmar D, Jung C, Figulla H-R, et al. Decrease of circulating myeloid dendritic cells in patients with chronic heart failure. *Acta Cardiol*. 2016 Apr;71(2):165–72.



54. Yilmaz A, Weber J, Cicha I, Stumpf C, Klein M, Raithel D, et al. Decrease in circulating myeloid dendritic cell precursors in coronary artery disease. *J Am Coll Cardiol*. 2006 Jul 4;48(1):70–80.
55. Pistulli R, König S, Drobnik S, Kretzschmar D, Rohm I, Lichtenauer M, et al. Decrease in dendritic cells in endomyocardial biopsies of human dilated cardiomyopathy. *Eur J Heart Fail*. 2013 Sep;15(9):974–85.
56. Weiss RM, Miller JD, Heistad DD. Fibrocalcific aortic valve disease: opportunity to understand disease mechanisms using mouse models. *Circ Res*. 2013 Jul 5;113(2):209–22.
57. Oral H, Sivasubramanian N, Dyke DB, Mehta RH, Grossman PM, Briesmiester K, et al. Myocardial proinflammatory cytokine expression and left ventricular remodeling in patients with chronic mitral regurgitation. *Circulation*. 2003 Feb 18;107(6):831–7.
58. Trikas A, Papathanasiou S, Tousoulis D, Tentolouris K, Vasiliadou K, Antoniades C, et al. Left atrial function, cytokines and soluble apoptotic markers in mitral stenosis: effects of valvular replacement. *Int J Cardiol*. 2005 Mar 10;99(1):111–5.
59. Albert MA, Danielson E, Rifai N, Ridker PM, PRINCE Investigators. Effect of statin therapy on C-reactive protein levels: the pravastatin inflammation/CRP evaluation (PRINCE): a randomized trial and cohort study. *JAMA*. 2001 Jul 4;286(1):64–70.
60. Dichtl W, Dulak J, Frick M, Alber HF, Schwarzacher SP, Ares MPS, et al. HMG-CoA reductase inhibitors regulate inflammatory transcription factors in human endothelial and vascular smooth muscle cells. *Arterioscler Thromb Vasc Biol*. 2003 Jan 1;23(1):58–63.
61. Tavazzi L, Maggioni AP, Marchioli R, Barlera S, Franzosi MG, Latini R, et al. Effect of rosuvastatin in patients with chronic heart failure (the GISSI-HF trial): a randomised, double-blind, placebo-controlled trial. *Lancet Lond Engl*. 2008 Oct

4;372(9645):1231–9.

62. Kjekshus J, Apetrei E, Barrios V, Böhm M, Cleland JGF, Cornel JH, et al. Rosuvastatin in older patients with systolic heart failure. *N Engl J Med*. 2007 Nov 29;357(22):2248–61.

63. McMurray JJV, Kjekshus J, Gullestad L, Dunselman P, Hjalmarsen A, Wedel H, et al. Effects of statin therapy according to plasma high-sensitivity C-reactive protein concentration in the Controlled Rosuvastatin Multinational Trial in Heart Failure (CORONA): a retrospective analysis. *Circulation*. 2009 Dec 1;120(22):2188–96.

64. Mann DL, McMurray JJV, Packer M, Swedberg K, Borer JS, Colucci WS, et al. Targeted anticytokine therapy in patients with chronic heart failure: results of the Randomized Etanercept Worldwide Evaluation (RENEWAL). *Circulation*. 2004 Apr 6;109(13):1594–602.

65. Chung ES, Packer M, Lo KH, Fasanmade AA, Willerson JT, Anti-TNF Therapy Against Congestive Heart Failure Investigators. Randomized, double-blind, placebo-controlled, pilot trial of infliximab, a chimeric monoclonal antibody to tumor necrosis factor-alpha, in patients with moderate-to-severe heart failure: results of the anti-TNF Therapy Against Congestive Heart Failure (ATTACH) trial. *Circulation*. 2003 Jul 1;107(25):3133–40.

66. Sliwa K, Skudicky D, Candy G, Wisenbaugh T, Sareli P. Randomised investigation of effects of pentoxifylline on left-ventricular performance in idiopathic dilated cardiomyopathy. *Lancet Lond Engl*. 1998 Apr 11;351(9109):1091–3.

67. Skudicky D, Bergemann A, Sliwa K, Candy G, Sareli P. Beneficial effects of pentoxifylline in patients with idiopathic dilated cardiomyopathy treated with angiotensin-converting enzyme inhibitors and carvedilol: results of a randomized study. *Circulation*. 2001 Feb 27;103(8):1083–8.

68. Sliwa K, Woodiwiss A, Candy G, Badenhorst D, Libhaber C, Norton G, et

al. Effects of pentoxifylline on cytokine profiles and left ventricular performance in patients with decompensated congestive heart failure secondary to idiopathic dilated cardiomyopathy. *Am J Cardiol*. 2002 Nov 15;90(10):1118–22.

69. Gullestad L, Aass H, Fjeld JG, Wikeby L, Andreassen AK, Ihlen H, et al. Immunomodulating therapy with intravenous immunoglobulin in patients with chronic heart failure. *Circulation*. 2001 Jan 16;103(2):220–5.

70. McNamara DM, Holubkov R, Starling RC, Dec GW, Loh E, Torre-Amione G, et al. Controlled trial of intravenous immune globulin in recent-onset dilated cardiomyopathy. *Circulation*. 2001 May 8;103(18):2254–9.

71. Torre-Amione G, Anker SD, Bourge RC, Colucci WS, Greenberg BH, Hildebrandt P, et al. Results of a non-specific immunomodulation therapy in chronic heart failure (ACCLAIM trial): a placebo-controlled randomised trial. *Lancet Lond Engl*. 2008 Jan 19;371(9608):228–36.

72. Michelucci A, Ricciardi G, Sofi F, Gori AM, Pirolo F, Pieragnoli P, et al. Relation of inflammatory status to major adverse cardiac events and reverse remodeling in patients undergoing cardiac resynchronization therapy. *J Card Fail*. 2007 Apr;13(3):207–10.

73. Osmancik P, Herman D, Stros P, Linkova H, Vondrak K, Paskova E. Changes and prognostic impact of apoptotic and inflammatory cytokines in patients treated with cardiac resynchronization therapy. *Cardiology*. 2013;124(3):190–8.

74. Rubaj A, Ruciński P, Oleszczak K, Trojnar MK, Wójcik M, Wysokiński A, et al. Inflammatory activation following interruption of long-term cardiac resynchronization therapy. *Heart Vessels*. 2013 Sep;28(5):583–8.

75. Stanciu AE, Vatasescu RG, Stanciu MM, Iorgulescu C, Vasile AI, Dorobantu M. Cardiac resynchronization therapy in patients with chronic heart failure is associated with anti-inflammatory and anti-remodeling effects. *Clin Biochem*. 2013 Feb;46(3):230–4.

76. Lappegård KT, Bjørnstad H. Anti-Inflammatory Effect of Cardiac Resynchronization Therapy. *Pacing Clin Electrophysiol*. 2006 Jul 1;29(7):753–8.
77. Brouwers C, Versteeg H, Meine M, Heijnen CJ, Kavelaars AM, Pedersen SS, et al. Association between brain natriuretic peptide, markers of inflammation and the objective and subjective response to cardiac resynchronization therapy. *Brain Behav Immun*. 2014 Aug;40:211–8.
78. Tarquini R, Guerra CT, Porciani MC, Michelucci A, Padeletti M, Ricciardi G, et al. Effects of cardiac resynchronization therapy on systemic inflammation and neurohormonal pathways in heart failure. *Cardiol J*. 2009;16(6):545–52.
79. ATS statement: guidelines for the six-minute walk test. *Am J Respir Crit Care Med*. 2002 Jul 1;166(1):111–7.
80. Lancellotti P, Moura L, Pierard LA, Agricola E, Popescu BA, Tribouilloy C, et al. European Association of Echocardiography recommendations for the assessment of valvular regurgitation. Part 2: mitral and tricuspid regurgitation (native valve disease). *Eur J Echocardiogr J Work Group Echocardiogr Eur Soc Cardiol*. 2010 May;11(4):307–32.
81. Balkow S, Heinz S, Schmidbauer P, Kolanus W, Holzmann B, Grabbe S, et al. LFA-1 activity state on dendritic cells regulates contact duration with T cells and promotes T-cell priming. *Blood*. 2010 Sep 16;116(11):1885–94.
82. O'Doherty U, Peng M, Gezelter S, Swiggard WJ, Betjes M, Bhardwaj N, et al. Human blood contains two subsets of dendritic cells, one immunologically mature and the other immature. *Immunology*. 1994 Jul;82(3):487–93.
83. Liu Y-J. Dendritic Cell Subsets and Lineages, and Their Functions in Innate and Adaptive Immunity. *Cell*. 2001 Aug;106(3):259–62.
84. Cederblad B, Blomberg S, Vallin H, Perers A, Alm GV, Rönnblom L. Patients with systemic lupus erythematosus have reduced numbers of circulating natural interferon-alpha- producing cells. *J Autoimmun*. 1998 Oct;11(5):465–70.

85. Sugi Y, Yasukawa H, Kai H, Fukui D, Futamata N, Mawatari K, et al. Reduction and activation of circulating dendritic cells in patients with decompensated heart failure. *Int J Cardiol.* 2011 Mar 3;147(2):258–64.
86. Quinones MA, Young JB, Waggoner AD, Ostojic MC, Ribeiro LG, Miller RR. Assessment of pulsed Doppler echocardiography in detection and quantification of aortic and mitral regurgitation. *Br Heart J.* 1980 Dec;44(6):612–20.

## **8. Declaration**

**I hereby declare that all the experiments work of this thesis were carried out by myself under the supervision of Jun. - Prof. Dr. med Harald F. Langer. I affirm that I wrote the manuscript by myself, and this thesis is not published anywhere before.**

**Place/Date:**

**Signature:**

## **9. Acknowledgement**

First, I would like to thank my supervisor, Jun. - Prof. Dr. med. Harald F. Langer, for offering me the opportunity to undertake my thesis in his group, and for his constant support, valuable advice, knowledge and understanding throughout my postgraduate research.

I would also like to extend my sincere thanks to Dr. med. Johannes Patzelt and Frederic Eschermann for their valuable advices, and kind help on data analysis, collection. Further, I have to thank to Dr. Stella Autenrieth and Simone Pöschel for the valuable advises and support with imaging flow cytometer. In addition, I am grateful to lots of young doctors and nurses in cardiology department, by whom I even don't know all the names, for their kind help in accomplishing the clinical data collection.

I also give my special and warmest thanks to everyone in the cardiology lab for the unique atmosphere, and everybody who has helped, supported me throughout the years of this work. Especially to Sarah Gekeler, Klaudia Posavec and Qifeng Zhou, not only for their kind help on scientific work, but also for the everyday we shared in the lab. I will never forget the life I spent in Tübingen with all of you.

Many thanks to all of the friends I've made in Tübingen in the past years. All of you made my life here so colorful and delightful.

Most importantly, I have to thank my parents for their support, encouragement and endless love, without them I could not become a person like today. Also, I would like to extend an expression of my heart-felt gratitude to my lover, Zaitao Sun, who sacrificed his valuable time to accompany me all this way and it is a joy to share with him the most wonderful and longest ride of our lives. I love you all.

Yingying Zhang

Nov, 2016, Tübingen



